

DIRECTION  
77 deg(T)

28.19467°S  
153.14167°E

ACCURACY 30 m  
DATUM WGS84



RTI 19069 QFES FINAL RELEASE DOCUMENTS

A0B Steve  
Brittingham

2019-09-08  
09:39:32+10:00



DIRECTION  
308 deg(T)

28.20059°S  
153.16970°E

ACCURACY 1.66 km  
DATUM WGS84



RTI 19069 QFES FINAL RELEASE DOCUMENTS

A0B Steve Brittingham

2019-09-08  
09:41:45+10:00



DIRECTION  
291 deg(T)

28.22527°S  
153.23739°E

ACCURACY 10 m  
DATUM WGS84



RTI 19069 QFES FINAL RELEASE DOCUMENTS

A0B Steve Brittingham

2019-09-08  
11:44:54+10:00



DIRECTION  
174 deg(T)

28.16126°S  
153.17930°E

ACCURACY 50 m  
DATUM WGS84



RTI 19069 QFES FINAL P

A0B Steve Brittingham

2019-09-08  
11:48:21+10:00



DIRECTION  
159 deg(T)

28.23747°S  
153.22619°E

ACCURACY 5.09 km  
DATUM WGS84



RTI 19069 OFES FINAL RELEASE DOCUMENTS

A0B Steve Brittingham

2019-09-08  
11:59:12+10:00



DIRECTION  
123 deg(T)

27.73504°S  
153.23537°E

ACCURACY 2.03 km  
DATUM WGS84



A0B Steve Brittingham

2019-09-08  
09:22:19+10:00

RTI 19069 Page 156



DIRECTION  
24 deg(T)

28.20444°S  
153.12993°E

ACCURACY 1.02 km  
DATUM WGS84



A0B Steve  
Brittingham

2019-09-08  
09:32:32+10:00



DIRECTION  
0 deg(T)

28.23860°S  
153.18749°E

ACCURACY 5 m  
DATUM WGS84



A0B Steve Brittingham

2019-09-08  
09:32:55+10:00

RTI 19069 Page 158



DIRECTION  
356 deg(T)

28.23814°S  
153.19571°E

ACCURACY 5 m  
DATUM WGS84



RTI 19069 QFES FINAL RELEASE DOCUMENTS

A0B Steve Brittingham

2019-09-08  
09:33:05+10:00

RTI 19069 Page 159



DIRECTION  
306 deg(T)

28.22420°S  
153.22551°E

ACCURACY 10 m  
DATUM WGS84



RTI 19069 QFES FINAL RELEASE DOCUMENTS

A0B Steve Brittingham

2019-09-08  
09:33:45+10:00

RTI 19069 Page 160



DIRECTION  
240 deg(T)

28.18066°S  
153.23469°E

ACCURACY 10 m  
DATUM WGS84



RTI 19069 QFES FINAL RELEASE DOCUMENTS

A0B Steve  
Brittingham

2019-09-08  
09:34:59+10:00

RTI 19069 Page 1161



DIRECTION  
181 deg(T)

28.15330°S  
153.18945°E

ACCURACY 10 m  
DATUM WGS84

RTI 19069 QFES FINAL RELEASE DOCUMENTS



DIRECTION  
103 deg(T)

28.18598°S  
153.14274°E

ACCURACY 10 m  
DATUM WGS84



A0B Steve  
Brittingham

2019-09-08  
09:39:01-10:00



DIRECTION  
77 deg(T)

28.19467°S  
153.14167°E

ACCURACY 30 m  
DATUM WGS84



A0B Steve  
Brittingham

2019-09-08  
09:39:32+10:00



DIRECTION  
308 deg(T)

28.20059°S  
153.16970°E

ACCURACY 1.66 km  
DATUM WGS84



RTI 19069 QFES FINAL RELEASE DOCUMENTS

A0B Steve Brittingham

2019-09-08  
09:41:45+10:00

RTI 19069 Page 165



DIRECTION  
2 deg(T)

28.25546°S  
153.17801°E

ACCURACY 50 m  
DATUM WGS84



RTI 19069 QFES FINAL RELEASE DOCUMENTS

A0B Steve Brittingham

2019-09-08  
10:08:09+10:00

RTI 19069 Page 166



DIRECTION  
293 deg(T)

28.22071°S  
153.25410°E

ACCURACY 200 m  
DATUM WGS84

RTI 19069 QFES FINAL RELEASE DOCUMENTS



DIRECTION  
183 deg(T)

28.06422°S  
153.35229°E

ACCURACY 2.22 km  
DATUM WGS84



A0B Steve Brittingham

2019-09-08  
10:27:31+10:00  
RTI 19069 Page 168



DIRECTION  
8 deg(T)

28.22121°S  
153.23051°E

ACCURACY 5.00 km  
DATUM WGS84



RTI 19069 QFES FINAL RELEASE DOCUMENTS

A0B Steve Brittingham

2019-09-08  
10:33:59+10:00

RTI 19069 Page 169



DIRECTION  
304 deg(T)

28.22545°S  
153.25178°E

ACCURACY 30 m  
DATUM WGS84



RTI 19069 QFES FINAL RELEASE DOCUMENTS

A0B Steve Brittingham

2019-09-08  
10:35:45+10:00

RTI 19069 Page 170



DIRECTION  
288 deg(T)

28.21717°S  
153.25605°E

ACCURACY 144 m  
DATUM WGS84





DIRECTION  
89 deg(T)

28.15193°S  
153.24685°E

ACCURACY 5.02 km  
DATUM WGS84



A0B Steve Brittingham

2019-09-08  
10:43:12+10:00

RTI 19069 Page 172



DIRECTION  
196 deg(T)

27.98475°S  
153.39152°E

ACCURACY 2.00 km  
DATUM WGS84



A0B Steve Brittingham

2019-09-08  
10:51:14+10:00  
RTI 19069 Page 173



DIRECTION  
122 deg(T)

28.16043°S  
153.13038°E

ACCURACY 30 m  
DATUM WGS84



RTI 19069 QFES FINAL RELEASE DOCUMENTS

A0B Steve Brittingham

2019-09-08  
10:53:39+10:00

RTI 19069 Page 174



DIRECTION  
61 deg(T)

28.19872°S  
153.13532°E

ACCURACY 10 m  
DATUM WGS84



A0B Steve Brittingham

2019-09-08  
11:07:58+10:00  
RTI 19069 Page 175



DIRECTION  
308 deg(T)

28.23942°S  
153.20901°E

ACCURACY 2.37 km  
DATUM WGS84



A0B Steve Brittingham

2019-09-08  
11:10:46+10:00

RTI 19069 Page 176



DIRECTION  
338 deg(T)

28.12029°S  
153.14802°E

ACCURACY 230 m  
DATUM WGS84



A0B Steve Brittingham

2019-09-08  
11:20:31+10:00  
RTI 19069 Page 177



DIRECTION  
1 deg(T)

28.11034°S  
153.20410°E

ACCURACY 10 m  
DATUM WGS84



A0B Steve Brittingham

2019-09-08  
11:21:18+10:00  
RTI 19069 Page 178



DIRECTION  
331 deg(T)

28.11074°S  
153.10294°E

ACCURACY 1.22 km  
DATUM WGS84



RTI 19069 QFES FINAL RELEASE DOCUMENTS

A0B Steve Brittingham

2019-09-08  
11:28:30+10:00

RTI 19069 Page 179



DIRECTION  
62 deg(T)

28.13648°S  
153.22355°E

ACCURACY 1.84 km  
DATUM WGS84



A0B Steve  
Brittingham

2019-09-08  
11:42:07-10:00







DIRECTION  
317 deg(T)

27.87556°S  
153.34293°E

ACCURACY 7.49 km  
DATUM WGS84



A0B Steve Brittingham

2019-09-08  
11:44:25+10:00  
RTI 19069 Page 182



DIRECTION  
291 deg(T)

28.22527°S  
153.23739°E

ACCURACY 10 m  
DATUM WGS84



A0B Steve Brittingham

2019-09-08  
11:44:54+10:00  
RTI 19069 Page 183



DIRECTION  
187 deg(T)

28.18539°S  
153.26257°E

ACCURACY 1.52 km  
DATUM WGS84



A0B Steve  
Brittingham

2019-09-08  
11:47:59+10:00



DIRECTION  
174 deg(T)

28.16126°S  
153.17930°E

ACCURACY 50 m  
DATUM WGS84



A0B Steve Brittingham

2019-09-08  
11:48:21+10:00

RTI 19069 Page 185



DIRECTION  
159 deg(T)

28.23747°S  
153.22619°E

ACCURACY 5.09 km  
DATUM WGS84



A0B Steve Brittingham

2019-09-08  
11:59:12+10:00

RTI 19069 Page 186



DIRECTION  
167 deg(T)

28.40645°S  
152.54474°E

ACCURACY 100 m  
DATUM WGS84



A0B Steve Brittingham

2019-09-08  
12:07:57+10:00

RTI 19069 Page 1187



DIRECTION  
278 deg(T)

28.17043°S  
153.22904°E

ACCURACY 10 m  
DATUM WGS84



RTI 19069 QFES FINAL RELEASE DOCUMENTS

A0B Steve Brittingham

2019-09-08  
13:21:36+10:00

RTI 19069 Page 188



DIRECTION  
288 deg(T)

28.16381°S  
153.23041°E

ACCURACY 10 m  
DATUM WGS84



RTI 19069 QFES FINAL RELEASE DOCUMENTS

A0B Steve Brittingham

2019-09-08  
13:21:45+10:00

RTI 19069 Page 189



DIRECTION  
123 deg(T)

27.73504°S  
153.23537°E

ACCURACY 2.03 km  
DATUM WGS84



A0B Steve Brittingham

2019-09-08  
09:22:19+10:00

RTI 19069 Page 190



DIRECTION  
24 deg(T)

28.20444°S  
153.12993°E

ACCURACY 1.02 km  
DATUM WGS84



A0B Steve  
Brittingham

2019-09-08  
09:32:32+10:00



DIRECTION  
0 deg(T)

28.23860°S  
153.18749°E

ACCURACY 5 m  
DATUM WGS84



RTI 19069 QFES FINAL RELEASE DOCUMENTS



DIRECTION  
356 deg(T)

28.23814°S  
153.19571°E

ACCURACY 5 m  
DATUM WGS84



RTI 19069 QFES FINAL RELEASE DOCUMENTS

A0B Steve Brittingham

2019-09-08  
09:33:05+10:00

RTI 19069 Page 193



DIRECTION  
306 deg(T)

28.22420°S  
153.22551°E

ACCURACY 10 m  
DATUM WGS84



A0B Steve Brittingham

2019-09-08  
09:33:45+10:00  
RTI 19069 Page 194



DIRECTION  
240 deg(T)

28.18066°S  
153.23469°E

ACCURACY 10 m  
DATUM WGS84



RTI 19069 QFES FINAL RELEASE DOCUMENTS

A0B Steve  
Brittingham

2019-09-08  
09:34:59+10:00

RTI 19069 Page 1195



DIRECTION  
181 deg(T)

28.15330°S  
153.18945°E

ACCURACY 10 m  
DATUM WGS84

RTI 19069 QFES FINAL RELEASE DOCUMENTS



DIRECTION  
103 deg(T)

28.18598°S  
153.14274°E

ACCURACY 10 m  
DATUM WGS84



A0B Steve  
Brittingham

2019-09-08  
09:39:01-10:00



DIRECTION  
77 deg(T)

28.19467°S  
153.14167°E

ACCURACY 30 m  
DATUM WGS84



A0B Steve  
Brittingham

2019-09-08  
09:39:32+10:00



DIRECTION  
308 deg(T)

28.20059°S  
153.16970°E

ACCURACY 1.66 km  
DATUM WGS84



RTI 19069 QFES FINAL RELEASE DOCUMENTS

A0B Steve Brittingham

2019-09-08  
09:41:45+10:00

RTI 19069 Page 199



DIRECTION  
2 deg(T)

28.25546°S  
153.17801°E

ACCURACY 50 m  
DATUM WGS84



RTI 19069 QFES FINAL RELEASE DOCUMENTS

A0B Steve Brittingham

2019-09-08  
10:08:09+10:00

RTI 19069 Page 200



DIRECTION  
293 deg(T)

28.22071°S  
153.25410°E

ACCURACY 200 m  
DATUM WGS84

RTI 19069 QFES FINAL RELEASE DOCUMENTS



DIRECTION  
183 deg(T)

28.06422°S  
153.35229°E

ACCURACY 2.22 km  
DATUM WGS84



A0B Steve Brittingham

2019-09-08  
10:27:31+10:00  
RTI 19069 Page 1202



DIRECTION  
8 deg(T)

28.22121°S  
153.23051°E

ACCURACY 5.00 km  
DATUM WGS84



RTI 19069 OFES FINAL RELEASE DOCUMENTS

A0B Steve Brittingham

2019-09-08  
10:33:59+10:00

RTI 19069 Page 203



DIRECTION  
304 deg(T)

28.22545°S  
153.25178°E

ACCURACY 30 m  
DATUM WGS84



RTI 19069 QFES FINAL RELEASE DOCUMENTS

A0B Steve Brittingham

2019-09-08  
10:35:45+10:00  
RTI 19069 Page 204



DIRECTION  
288 deg(T)

28.21717°S  
153.25605°E

ACCURACY 144 m  
DATUM WGS84



A0B Steve Brittingham

2019-09-08  
10:35:54+10:00  
RTI 19069 Page 1205



DIRECTION  
89 deg(T)

28.15193°S  
153.24685°E

ACCURACY 5.02 km  
DATUM WGS84



A0B Steve Brittingham

2019-09-08  
10:43:12+10:00



DIRECTION  
196 deg(T)

27.98475°S  
153.39152°E

ACCURACY 2.00 km  
DATUM WGS84



RTI 19069 QFES FINAL RELEASE DOCUMENTS

A0B Steve Brittingham

2019-09-08  
10:51:14+10:00

RTI 19069 Page 1207



DIRECTION  
122 deg(T)

28.16043°S  
153.13038°E

ACCURACY 30 m  
DATUM WGS84



A0B Steve Brittingham

2019-09-08  
10:53:39+10:00

RTI 19069 Page 1208



DIRECTION  
61 deg(T)

28.19872°S  
153.13532°E

ACCURACY 10 m  
DATUM WGS84



A0B Steve Brittingham

2019-09-08  
11:07:58+10:00



DIRECTION  
308 deg(T)

28.23942°S  
153.20901°E

ACCURACY 2.37 km  
DATUM WGS84



A0B Steve Brittingham

2019-09-08  
11:10:46+10:00

RTI 19069 Page 1210



DIRECTION  
338 deg(T)

28.12029°S  
153.14802°E

ACCURACY 230 m  
DATUM WGS84



A0B Steve Brittingham

2019-09-08  
11:20:31+10:00  
RTI 19069 Page 0211



DIRECTION  
1 deg(T)

28.11034°S  
153.20410°E

ACCURACY 10 m  
DATUM WGS84



A0B Steve Brittingham

2019-09-08  
11:21:18+10:00

RTI 19069 Page 0212



DIRECTION  
331 deg(T)

28.11074°S  
153.10294°E

ACCURACY 1.22 km  
DATUM WGS84



A0B Steve Brittingham

2019-09-08  
11:28:30+10:00  
RTI 19069 Page 213



DIRECTION  
62 deg(T)

28.13648°S  
153.22355°E

ACCURACY 1.84 km  
DATUM WGS84



A0B Steve  
Brittingham

2019-09-08  
11:42:07-10:00



DIRECTION  
60 deg(T)

28.13648°S  
153.22355°E

ACCURACY 1.84 km  
DATUM WGS84



A0B Steve  
Brittingham

2019-09-08  
11:42:09-10:00



DIRECTION  
317 deg(T)

27.87556°S  
153.34293°E

ACCURACY 7.49 km  
DATUM WGS84



A0B Steve Brittingham

2019-09-08  
11:44:25+10:00



DIRECTION  
291 deg(T)

28.22527°S  
153.23739°E

ACCURACY 10 m  
DATUM WGS84



A0B Steve Brittingham

2019-09-08  
11:44:54+10:00  
RTI 19069 Page 1217



DIRECTION  
187 deg(T)

28.18539°S  
153.26257°E

ACCURACY 1.52 km  
DATUM WGS84



RTI 19069 QFES FINAL RELEASE DOCUMENTS

A0B Steve  
Brittingham

2019-09-08  
11:47:59+10:00



DIRECTION  
174 deg(T)

28.16126°S  
153.17930°E

ACCURACY 50 m  
DATUM WGS84



A0B Steve Brittingham

2019-09-08  
11:48:21+10:00

RTI 19069 Page 1219



DIRECTION  
159 deg(T)

28.23747°S  
153.22619°E

ACCURACY 5.09 km  
DATUM WGS84



RTI 19069 QFES FINAL RELEASE DOCUMENTS

A0B Steve Brittingham

2019-09-08  
11:59:12+10:00  
RTI 19069 Page 0220



DIRECTION  
167 deg(T)

28.40645°S  
152.54474°E

ACCURACY 100 m  
DATUM WGS84



A0B Steve Brittingham

2019-09-08  
12:07:57+10:00

RTI 19069 Page 1221



DIRECTION  
353 deg(T)

28.27511°S  
153.00810°E

ACCURACY 3.28 km  
DATUM WGS84



RTI 19069 OFES FINAL RELEASE DOCUMENTS

A0B Steve Brittingham

2019-09-08  
13:19:35+10:00

RTI 19069 Page 0222



DIRECTION  
338 deg(T)

28.22028°S  
153.16075°E

ACCURACY 5 m  
DATUM WGS84



RTI 19069 QFES FINAL RELEASE DOCUMENTS

A0B Steve Brittingham

2019-09-08  
13:19:57+10:00  
RTI 19069 Page 0223



DIRECTION  
356 deg(T)

28.20844°S  
153.19318°E

ACCURACY 5 m  
DATUM WGS84



RTI 19069 QIES FINAL RELEASE DOCUMENTS

A0B Steve Brittingham

2019-09-08  
13:20:35+10:00  
RTI 19069 Page 224



DIRECTION  
298 deg(T)

28.19601°S  
153.21927°E

ACCURACY 10 m  
DATUM WGS84

RTI 19069 QFES FINAL RELEASE DOCUMENTS



DIRECTION  
160 deg(T)

28.29518°S  
152.83274°E

ACCURACY 5.00 km  
DATUM WGS84



A0B Steve Brittingham

2019-09-09  
10:19:01+10:00

RTI 19069 Page 226



DIRECTION  
273 deg(T)

28.19780°S  
153.14706°E

ACCURACY 1.41 km  
DATUM WGS84

RTI 19069 QFES FINAL RELEASE DOCUMENTS

A0B Steve Brittingham

2019-09-09  
10:22:25+10:00

RTI 19069 Page 1227



DIRECTION  
0 deg(T)

28.14668°S  
153.19058°E

ACCURACY 1.54 km  
DATUM WGS84



A0B Steve Brittingham

2019-09-09  
10:27:36+10:00



DIRECTION  
329 deg(T)

28.14668°S  
153.19058°E

ACCURACY 1.54 km  
DATUM WGS84



A0B Steve Brittingham

2019-09-09  
10:27:42+10:00

RTI 19069 Page 0229



DIRECTION  
262 deg(T)

28.20600°S  
153.14169°E

ACCURACY 5.00 km  
DATUM WGS84



A0B Steve Brittingham

2019-09-09  
10:29:31+10:00  
RTI 19069 Page 230



DIRECTION  
165 deg(T)

28.14887°S  
153.18242°E

ACCURACY 5.00 km  
DATUM WGS84



A0B Steve Brittingham

2019-09-09  
10:32:11+10:00  
RTI 19069 Page 1231



DIRECTION  
230 deg(T)

28.26256°S  
153.23704°E

ACCURACY 2.00 km  
DATUM WGS84



A0B Steve Brittingham

2019-09-09  
10:51:05+10:00



DIRECTION  
91 deg(T)

28.13679°S  
153.14439°E

ACCURACY 5 m  
DATUM WGS84



RTI 19069 QFES FINAL RELEASE DOCUMENTS

FB448  
Beechmont

AAS B Barnes  
AOB S James

2019-09-09  
09:59:27+10:00



DIRECTION  
61 deg(T)

28.19061°S  
153.16905°E

ACCURACY 5 m  
DATUM WGS84



FB448  
Beechmont

AAS B Barnes  
AOB S James

2019-09-09  
10:02:24+10:00



DIRECTION  
189 deg(T)

28.16076°S  
153.11938°E

ACCURACY 5 m  
DATUM WGS84



FB448  
Kamarun Lookout

AAS B Barnes  
AOB S James

2019-09-09  
16:31:20+10:00



DIRECTION  
158 deg(T)

28.19031°S  
153.18873°E

ACCURACY 5 m  
DATUM WGS84



FB448  
Beechmont

AAS B Barnes  
AOB S James

2019-09-09  
09:01:57+10:00



DIRECTION  
258 deg(T)

28.12904°S  
153.10514°E

ACCURACY 5 m  
DATUM WGS84



FB448  
Kamarun Lookout

AAS B Barnes  
AOB S James

2019-09-09  
16:36:10+10:00



DIRECTION  
123 deg(T)

28.14665°S  
153.12487°E

ACCURACY 5 m  
DATUM WGS84



FWI 19063 GFES FINAL RELEASE DOCUMENTS

FB448  
Alpaca Fire

AAS B Barnes  
AOB S James

2019-09-10  
11:04:12+10:00



Maps



+

Q P



10 m



DIRECTION  
235 deg(T)

28.15818°S  
153.12623°E

ACCURACY 5 m  
DATUM WGS84



FB448  
Beechmont

AAS B Barnes  
AOB S James

2019-09-09  
12:06:51+10:00



DIRECTION  
159 deg(T)

28.15828°S  
153.17661°E

ACCURACY 5 m  
DATUM WGS84



FB448  
Beechmont

AAS B Barnes  
AOB S James

2019-09-09  
11:53:27+10:00



DIRECTION  
217 deg(T)

28.19237°S  
153.19157°E

ACCURACY 10 m  
DATUM WGS84



FB448  
Beechmont

AAS B Barnes  
AOB S James

2019-09-09  
08:57:48+10:00



DIRECTION  
208 deg(T)

28.19573°S  
153.18574°E

ACCURACY 5 m  
DATUM WGS84



FB448  
Beechmont

AAS B Barnes  
AOB S James

2019-09-09  
09:48:35+10:00



DIRECTION  
228 deg(T)

28.19554°S  
153.18669°E

ACCURACY 5 m  
DATUM WGS84



FINAL RELEASE DOCUMENTS

FB448  
Beechmont

AAS B Barnes  
AOB S James

2019-09-09  
09:48:31+10:00



DIRECTION  
312 deg(T)

28.14412°S  
153.11727°E

ACCURACY 30 m  
DATUM WGS84



FB448  
Alpaca Fire

AAS B Barnes  
AOB S James

2019-09-10  
11:05:22+10:00



DIRECTION  
236 deg(T)

28.13650°S  
153.10287°E

ACCURACY 5 m  
DATUM WGS84



FB448  
Kamarun Lookout

AAS B Barnes  
AOB S James

2019-09-09  
16:36:34+10:00



DIRECTION  
255 deg(T)

28.17633°S  
153.18960°E

ACCURACY 165 m  
DATUM WGS84



RTI 19069 QFES FINAL RELEASE DOCUMENTS

FB448  
Beechmont

AAS B Barnes  
AOB S James

2019-09-09  
12:50:00+10:00



DIRECTION  
117 deg(T)

28.13876°S  
153.12143°E

ACCURACY 10 m  
DATUM WGS84



RTI 19069 QFES FINAL RELEASE DOCUMENTS

FB448  
Beechmont

AAS B Barnes  
AOB S James

2019-09-09  
13:27:30+10:00



DIRECTION  
255 deg(T)

28.17633°S  
153.18960°E

ACCURACY 165 m  
DATUM WGS84



FB448  
Beechmont

AAS B Barnes  
AOB S James

2019-09-09  
12:50:00+10:00



DIRECTION  
223 deg(T)

28.15368°S  
153.11476°E

ACCURACY 5 m  
DATUM WGS84



FB448  
Kamarun Lookout

AAS B Barnes  
AOB S James

2019-09-09  
16:27:51+10:00



DIRECTION  
197 deg(T)

28.06140°S  
153.11510°E

ACCURACY 5 m  
DATUM WGS84



ASS Hadow  
A0B Reeves

FB 448  
Sarabah...

2019-09-04  
13:39:45+10:00



DIRECTION  
103 deg(T)

28.06832°S  
153.20705°E

ACCURACY 10 m  
DATUM WGS84



FB448

AAS B Barnes  
AOB S James

2019-09-10  
09:52:34+10:00



DIRECTION  
138 deg(T)

28.14750°S  
153.16752°E

ACCURACY 5 m  
DATUM WGS84



FB448  
McKenzie Rd

AAS B Barnes  
AOB S James

2019-09-10  
15:37:43+10:00



DIRECTION  
109 deg(T)

28.19680°S  
153.18582°E

ACCURACY 5 m  
DATUM WGS84



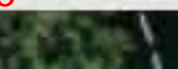
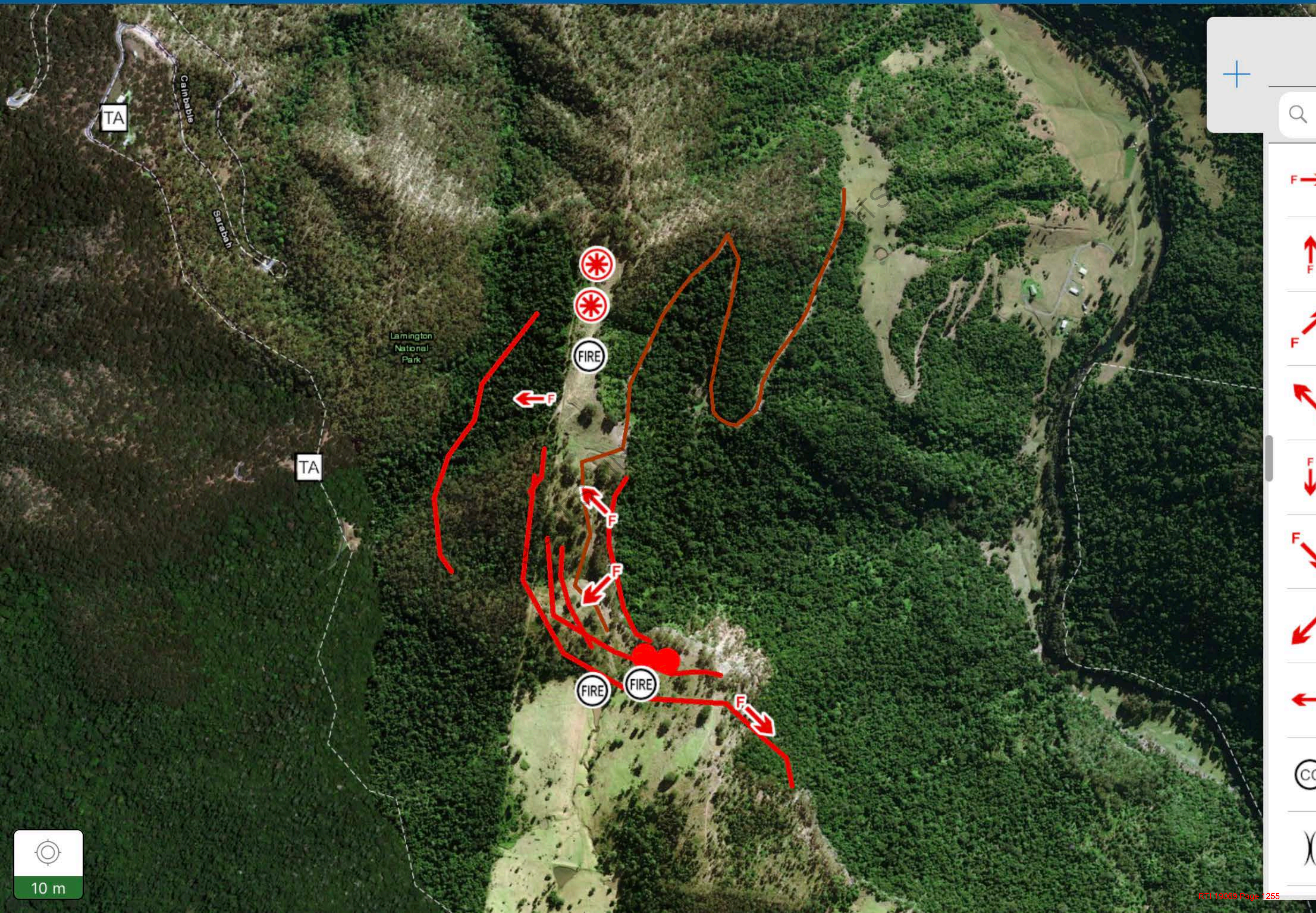
FB448  
Beechmont

AAS B Barnes  
AOB S James

2019-09-09  
10:57:12+10:00



Maps





DIRECTION  
72 deg(T)

28.17799°S  
153.18717°E

ACCURACY 5 m  
DATUM WGS84



FB448  
Beechmont

AAS B Barnes  
AOB S James

2019-09-09  
08:54:09+10:00



DIRECTION  
199 deg(T)

28.15130°S  
153.18797°E

ACCURACY 5 m  
DATUM WGS84



RTI 19069 QFES FINAL RELEASE DOCUMENTS

FB448  
Beechmont

AAS B Barnes  
AOB S James

2019-09-09  
12:11:11+10:00



DIRECTION  
262 deg(T)

28.07928°S  
153.21986°E

ACCURACY 5 m  
DATUM WGS84



RTI 19069 QFES FINAL RELEASE DOCUMENTS

FB448  
Back Creek – Military

AAS B Barnes  
AOB S James

2019-09-10  
15:41:42+10:00



DIRECTION  
353 deg(T)

28.17888°S  
153.13444°E

ACCURACY 5 m  
DATUM WGS84



FB448  
Binna Burra

AAS B Barnes  
AOB S James

2019-09-09  
12:08:33+10:00



DIRECTION  
109 deg(T)

28.14026°S  
153.11996°E

ACCURACY 10 m  
DATUM WGS84



FB448  
Beechmont

AAS B Barnes  
AOB S James

2019-09-09  
13:27:41+10:00



DIRECTION  
109 deg(T)

28.14026°S  
153.11996°E

ACCURACY 10 m  
DATUM WGS84



FB448  
Beechmont

AAS B Barnes  
AOB S James

2019-09-09  
13:27:41+10:00



DIRECTION  
61 deg(T)

28.19061°S  
153.16905°E

ACCURACY 5 m  
DATUM WGS84



FB448  
Beechmont

AAS B Barnes  
AOB S James

2019-09-09  
10:02:24+10:00



DIRECTION  
216 deg(T)

28.14875°S  
153.12901°E

ACCURACY 5 m  
DATUM WGS84



FB448  
Alpaca Fire

AAS B Barnes  
AOB S James

2019-09-10  
11:03:57+10:00



DIRECTION  
218 deg(T)

28.16362°S  
153.21631°E

ACCURACY 5 m  
DATUM WGS84



FB448  
Beechmont

AAS B Barnes  
AOB S James

2019-09-09  
09:08:23+10:00



DIRECTION  
123 deg(T)

28.06357°S  
153.20539°E

ACCURACY 5 m  
DATUM WGS84



RTI 19069 QFES FINAL RELEASE DOCUMENTS

FB448  
Back Creek – Defence

AAS B Barnes  
AOB S James

2019-09-10  
11:44:45+10:00



DIRECTION  
214 deg(T)

28.16141°S  
153.11600°E

ACCURACY 5 m  
DATUM WGS84



RTI 19069 QFES FINAL RELEASE DOCUMENTS

FB448  
Kamarun Lookout

AAS B Barnes  
AOB S James

2019-09-09  
16:31:12+10:00



DIRECTION  
208 deg(T)

28.19573°S  
153.18574°E

ACCURACY 5 m  
DATUM WGS84



RTI 19069 QFES FINAL RELEASE DOCUMENTS

FB448  
Beechmont

AAS B Barnes  
AOB S James

2019-09-09  
09:48:35+10:00



DIRECTION  
216 deg(T)

28.14875°S  
153.12901°E

ACCURACY 5 m  
DATUM WGS84



FB448  
Alpaca Fire

AAS B Barnes  
AOB S James

2019-09-10  
11:03:57+10:00



DIRECTION  
164 deg(T)

28.19135°S  
153.18766°E

ACCURACY 5 m  
DATUM WGS84



RTI 19069 QFES FINAL RELEASE DOCUMENTS

FB448  
Beechmont

AAS B Barnes  
AOB S James

2019-09-09  
09:02:10+10:00



DIRECTION  
347 deg(T)

28.17852°S  
153.13185°E

ACCURACY 5 m  
DATUM WGS84



FB448  
Binna Burra

AAS B Barnes  
AOB S James

2019-09-09  
12:08:25+10:00



DIRECTION  
230 deg(T)

28.14427°S  
153.12843°E

ACCURACY 5 m  
DATUM WGS84



FB448  
Alpaca Fire

AAS B Barnes  
AOB S James

2019-09-10  
11:04:48+10:00



DIRECTION  
236 deg(T)

28.13650°S  
153.10287°E

ACCURACY 5 m  
DATUM WGS84



FB448  
Kamarun Lookout

AAS B Barnes  
AOB S James

2019-09-09  
16:36:34+10:00



DIRECTION  
212 deg(T)

28.17011°S  
153.22039°E

ACCURACY 5 m  
DATUM WGS84



RTI 19069 QFES FINAL RELEASE DOCUMENTS

FB448  
Beechmont

AAS B Barnes  
AOB S James

2019-09-09  
13:06:34+10:00



DIRECTION  
230 deg(T)

28.14427°S  
153.12843°E

ACCURACY 5 m  
DATUM WGS84



FB448  
Alpaca Fire

AAS B Barnes  
AOB S James

2019-09-10  
11:04:48+10:00



DIRECTION  
178 deg(T)

28.18861°S  
153.18729°E

ACCURACY 5 m  
DATUM WGS84



FB448  
Beechmont

AAS B Barnes  
AOB S James

2019-09-09  
08:55:15+10:00



DIRECTION  
210 deg(T)

28.19306°S  
153.18898°E

ACCURACY 10 m  
DATUM WGS84



FB448  
Beechmont

AAS B Barnes  
AOB S James

2019-09-09  
09:05:23+10:00



DIRECTION  
321 deg(T)

28.19825°S  
153.18958°E

ACCURACY 5 m  
DATUM WGS84



FB448  
Beechmont

AAS B Barnes  
AOB S James

2019-09-09  
09:48:14+10:00



DIRECTION  
223 deg(T)

28.15347°S  
153.11603°E

ACCURACY 5 m  
DATUM WGS84



RTI 19069 QFES FINAL RELEASE DOCUMENTS

FB448  
Kamarun Lookout

AAS B Barnes  
AOB S James

2019-09-09  
16:27:55+10:00



DIRECTION  
266 deg(T)

28.08371°S  
153.21893°E

ACCURACY 5 m  
DATUM WGS84



RTI 19069 QFES FINAL RELEASE DOCUMENTS

FB448  
Back Creek – Military

AAS B Barnes  
AOB S James

2019-09-10  
15:41:33+10:00



DIRECTION  
235 deg(T)

28.15818°S  
153.12623°E

ACCURACY 5 m  
DATUM WGS84



FB448  
Beechmont

AAS B Barnes  
AOB S James

2019-09-09  
12:06:51+10:00



DIRECTION  
312 deg(T)

28.14412°S  
153.11727°E

ACCURACY 30 m  
DATUM WGS84



FB448  
Alpaca Fire

AAS B Barnes  
AOB S James

2019-09-10  
11:05:22+10:00



DIRECTION  
189 deg(T)

28.16076°S  
153.11938°E

ACCURACY 5 m  
DATUM WGS84



FB448  
Kamarun Lookout

AAS B Barnes  
AOB S James

2019-09-09  
16:31:20+10:00



DIRECTION  
72 deg(T)

28.17799°S  
153.18717°E

ACCURACY 5 m  
DATUM WGS84



FB448  
Beechmont

AAS B Barnes  
AOB S James

2019-09-09  
08:54:09+10:00



DIRECTION  
209 deg(T)

28.19147°S  
153.19064°E

ACCURACY 5 m  
DATUM WGS84



FB448  
Beechmont

AAS B Barnes  
AOB S James

2019-09-09  
08:57:52+10:00



DIRECTION  
109 deg(T)

28.19680°S  
153.18582°E

ACCURACY 5 m  
DATUM WGS84



FB448  
Beechmont

AAS B Barnes  
AOB S James

2019-09-09  
10:57:12+10:00



DIRECTION  
236 deg(T)

28.16576°S  
153.21792°E

ACCURACY 5 m  
DATUM WGS84



RTI 19069 QFES/FIN/ RELEASE DOCUMENTS

FB448  
Beechmont

AAS B Barnes  
AOB S James

2019-09-09  
09:08:15+10:00



DIRECTION  
218 deg(T)

28.16362°S  
153.21631°E

ACCURACY 5 m  
DATUM WGS84



FB448  
Beechmont

AAS B Barnes  
AOB S James

2019-09-09  
09:08:23+10:00



DIRECTION  
173 deg(T)

28.19048°S  
153.18731°E

ACCURACY 5 m  
DATUM WGS84



FB448  
Beechmont

AAS B Barnes  
AOB S James

2019-09-09  
08:55:21+10:00



DIRECTION  
123 deg(T)

28.14665°S  
153.12487°E

ACCURACY 5 m  
DATUM WGS84



FWI 19063 GFES FINAL RELEASE DOCUMENTS

FB448  
Alpaca Fire

AAS B Barnes  
AOB S James

2019-09-10  
11:04:12+10:00



DIRECTION  
236 deg(T)

28.16576°S  
153.21792°E

ACCURACY 5 m  
DATUM WGS84



FB448  
Beechmont

AAS B Barnes  
AOB S James

2019-09-09  
09:08:15+10:00



DIRECTION  
103 deg(T)

28.06832°S  
153.20705°E

ACCURACY 10 m  
DATUM WGS84



FB448

AAS B Barnes  
AOB S James

2019-09-10  
09:52:34+10:00



DIRECTION  
159 deg(T)

28.15828°S  
153.17661°E

ACCURACY 5 m  
DATUM WGS84



FB448  
Beechmont

AAS B Barnes  
AOB S James

2019-09-09  
11:53:27+10:00



DIRECTION  
228 deg(T)

28.19554°S  
153.18669°E

ACCURACY 5 m  
DATUM WGS84



FB448  
Beechmont

AAS B Barnes  
AOB S James

2019-09-09  
09:48:31+10:00



DIRECTION  
64 deg(T)

28.15298°S  
153.12684°E

ACCURACY 5 m  
DATUM WGS84



AAS Brad Barnes  
A0B Ben Macht

Sarabah Fire  
FB448

2019-09-11  
13:57:21+10:00



DIRECTION  
260 deg(T)

28.15084°S  
153.11733°E

ACCURACY 5 m  
DATUM WGS84



AAS Brad Barnes  
A0B Ben Macht

Sarabah Fire -  
Alpaca Farm...

2019-09-11  
14:11:55+10:00



DIRECTION  
180 deg(T)

28.06569°S  
153.21231°E

ACCURACY 10 m  
DATUM WGS84



RTI 19069 QFES FINAL RELEASE DOCUMENTS

AAS Brad Barnes  
AOB Ben Macht

Sarabah Fire –  
Defence Section...

2019-09-11  
09:46:55+10:00



DIRECTION  
56 deg(T)

28.15368°S  
153.12791°E

ACCURACY 5 m  
DATUM WGS84



AAS Brad Barnes  
A0B Ben Macht

Sarabah Fire  
FB448

2019-09-11  
10:50:06+10:00



DIRECTION  
132 deg(T)

28.15112°S  
153.12702°E

ACCURACY 10 m  
DATUM WGS84



AAS Brad Barnes  
A0B Ben Macht

Sarabah Fire  
FB448

2019-09-11  
10:49:55+10:00



DIRECTION  
176 deg(T)

28.14993°S  
153.12786°E

ACCURACY 10 m  
DATUM WGS84



RTI 19069 QFES FINAL RELEASE DOCUMENTS

AAS Brad Barnes  
A0B Ben Macht

Sarabah Fire  
FB448

2019-09-11  
09:17:36+10:00



DIRECTION  
100 deg(T)

28.15320°S  
153.12850°E

ACCURACY 5 m  
DATUM WGS84



AAS Brad Barnes  
AOB Ben Macht

Sarabah Fire  
FB448

2019-09-11  
09:17:17+10:00