

DIRECTION  
73 deg(T)

28.15203°S  
153.12620°E

ACCURACY 5 m  
DATUM WGS84



AAS Brad Barnes  
A0B Ben Macht

Sarabah Fire  
FB448

2019-09-11  
13:57:18+10:00



DIRECTION  
89 deg(T)

28.15301°S  
153.12724°E

ACCURACY 10 m  
DATUM WGS84



AAS Brad Barnes  
A0B Ben Macht

Sarabah Fire  
FB448

2019-09-11  
10:49:22+10:00



DIRECTION  
313 deg(T)

28.06880°S  
153.21048°E

ACCURACY 5 m  
DATUM WGS84



RTI 19069 QFES FINAL RELEASE DOCUMENTS

AAS Brad Barnes  
AOB Ben Macht

Sarabah Fire –  
Defence Section...

2019-09-11  
10:30:26+10:00



DIRECTION  
298 deg(T)

28.07053°S  
153.21578°E

ACCURACY 5 m  
DATUM WGS84



RTI 19069 QFES FINAL RELEASE DOCUMENTS

AAS Brad Barnes  
AOB Ben Macht

Sarabah Fire –  
Defence Section...

2019-09-11  
09:42:34+10:00



DIRECTION  
27 deg(T)

28.15755°S  
153.14484°E

ACCURACY 5 m  
DATUM WGS84



AAS Brad Barnes  
AOB Ben Macht

Sarabah Fire –  
Alpaca Farm...

2019-09-11  
14:15:30+10:00



DIRECTION  
244 deg(T)

28.14070°S  
153.13357°E

ACCURACY 5 m  
DATUM WGS84



RTI 19069 QFES FINAL RELEASE DOCUMENTS

AAS Brad Barnes  
AOB Ben Macht

Sarabah Fire -  
Alpaca Farm...

2019-09-11  
14:10:50+10:00



DIRECTION  
45 deg(T)

28.16246°S  
153.14251°E

ACCURACY 5 m  
DATUM WGS84



AAS Brad Barnes  
AOB Ben Macht

Sarabah Fire –  
Alpaca Farm...

2019-09-11  
14:15:15+10:00



DIRECTION  
257 deg(T)

28.13501°S  
153.12064°E

ACCURACY 10 m  
DATUM WGS84



RTI 19069 QFES FINAL RELEASE DOCUMENTS

AAS Brad Barnes  
A0B Ben Macht

Sarabah Fire  
FB448

2019-09-11  
14:03:43+10:00



DIRECTION  
305 deg(T)

27.98638°S  
153.21262°E

ACCURACY 5 m  
DATUM WGS84



AAS Brad Barnes  
A0B Ben Macht

Tamborine  
FB448

2019-09-12  
14:56:38+10:00



DIRECTION  
212 deg(T)

28.06426°S  
153.21214°E

ACCURACY 5 m  
DATUM WGS84



RTI 19069 of 19 FINAL RELEASE DOCUMENTS

AAS Brad Barnes  
AOB Ben Macht

Sarabah Fire –  
Defence Area...

2019-09-12  
09:39:52+10:00



DIRECTION  
251 deg(T)

28.15087°S  
153.12562°E

ACCURACY 5 m  
DATUM WGS84



AAS Brad Barnes  
AOB Ben Macht

Sarabah Fire –  
Alpaca Farm...

2019-09-12  
08:50:34+10:00



DIRECTION  
266 deg(T)

28.14921°S  
153.13470°E

ACCURACY 5 m  
DATUM WGS84



AAS Brad Barnes  
A0B Ben Macht

Sarabah Fire  
FB448

2019-09-12  
11:35:59+10:00





RTI 19069 QFES FIVE  
PLEASE DO NOT



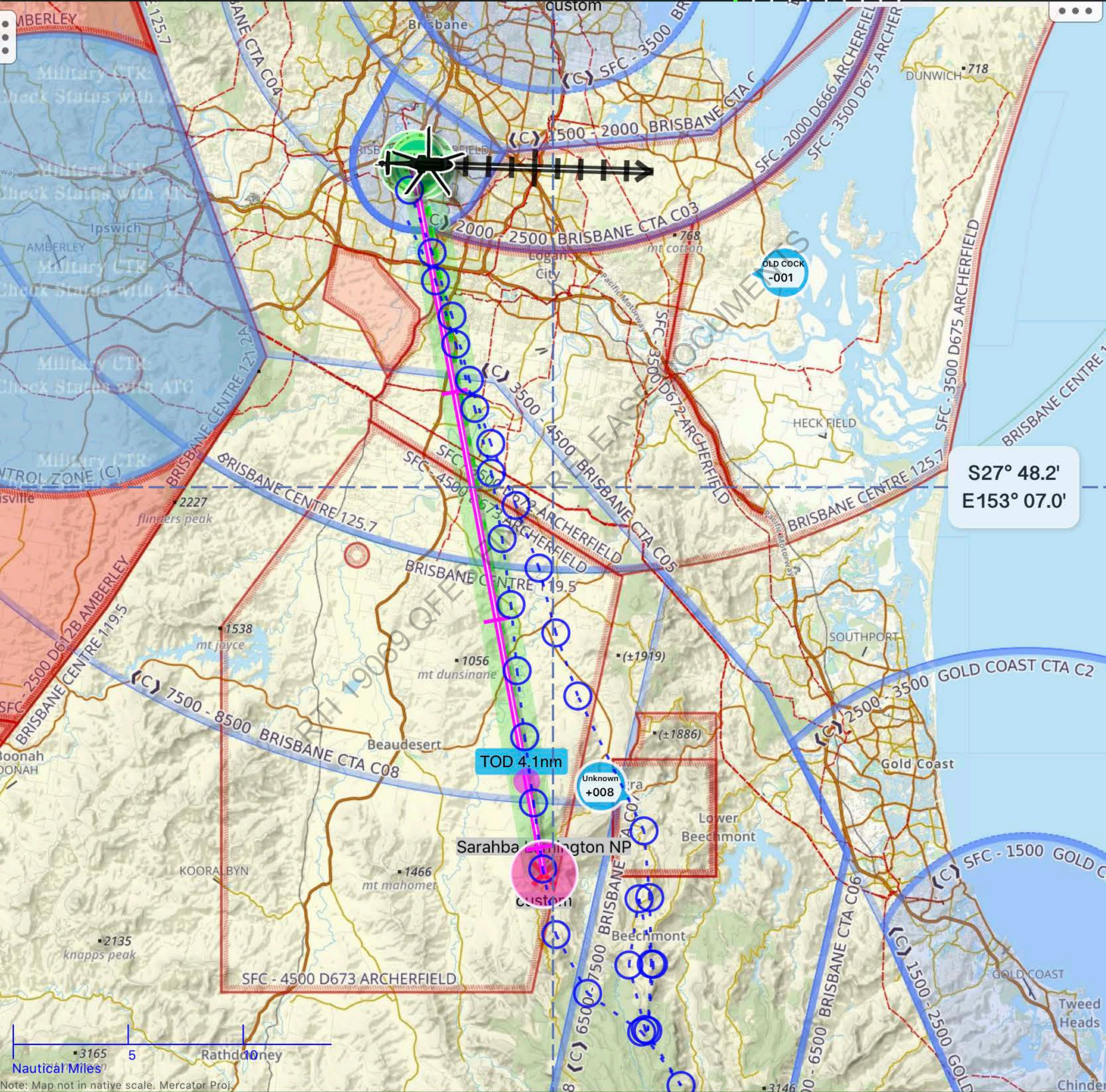


2008 CPES FINAL RELEASE DOCUMENTS



Flight 02:06:28 (2.1h)

GS <b>30kts</b>	TRK <b>081°M</b>	GPS ALT <b>94'</b>	UTC <b>07:02Z</b>	QNH [YBAF] <b>1022 hPa</b>	FIA/NXT BN 125.7 BN 134.3 (NXT)
DTG <b>31.1nm</b>	BRG (TO) <b>159°M</b>	ETE <b>62:27m</b>	ETA <b>08:05:21Z</b>	081°M 6 7 8 E 10	<b>Cancel</b> DCT SARAHBA LAMINGTON NP







RTI 19069065 PUBLIC RELEASE DOCUMENT



DIRECTION  
297 deg(T)

27.99085°S  
153.20835°E

ACCURACY 5 m  
DATUM WGS84



RTI 19069 QFES FINAL

AAS Brad Barnes  
AOB Ben Macht

Tamborine  
FB448

2019-09-12  
14:39:34+10:00









RTI 19069 QFES FINAL RELEASE DOCUMENTS



DIRECTION  
228 deg(T)

28.15211°S  
153.12510°E

ACCURACY 5 m  
DATUM WGS84



RTI 19069 QFES FINAL RELEASE DOCUMENTS

AAS Brad Barnes  
AOB Ben Macht

Sarabah Fire –  
Alpaca Farm...

2019-09-12  
08:50:38+10:00





RTI 19069 QFES FINAL RELEASE DOCUMENTS











DIRECTION  
280 deg(T)

28.18931°S  
153.21074°E

ACCURACY 5 m  
DATUM WGS84



AAS Brad Barnes  
A0B Ben Macht

Sarabah Fire –  
Alpaca Farm...

2019-09-12  
08:55:28+10:00



DIRECTION  
295 deg(T)

28.19506°S  
153.19272°E

ACCURACY 5 m  
DATUM WGS84



AAS Brad Barnes  
AOB Ben Macht

Sarabah Fire –  
Alpaca Farm...

2019-09-12  
09:18:30+10:00







DIRECTION  
280 deg(T)

28.18931°S  
153.21074°E

ACCURACY 5 m  
DATUM WGS84



AAS Brad Barnes  
A0B Ben Macht

Sarabah Fire –  
Alpaca Farm...

2019-09-12  
08:55:28+10:00





RTI 19069 QFES FINAL RELEASE DOCUMENTS



DIRECTION  
212 deg(T)

28.06426°S  
153.21214°E

ACCURACY 5 m  
DATUM WGS84



AAS Brad Barnes  
AOB Ben Macht

Sarabah Fire –  
Defence Area...

2019-09-12  
09:39:52+10:00



DIRECTION  
358 deg(T)

28.15720°S  
153.13063°E

ACCURACY 5 m  
DATUM WGS84



RTI 19068 OPES FINAL RELEASE DOCUMENTS

AAS Brad Barnes  
A0B Ben Macht

Sarabah Fire  
FB448

2019-09-12  
15:36:56+10:00







DIRECTION  
37 deg(T)

28.15268°S  
153.17065°E

ACCURACY 5 m  
DATUM WGS84



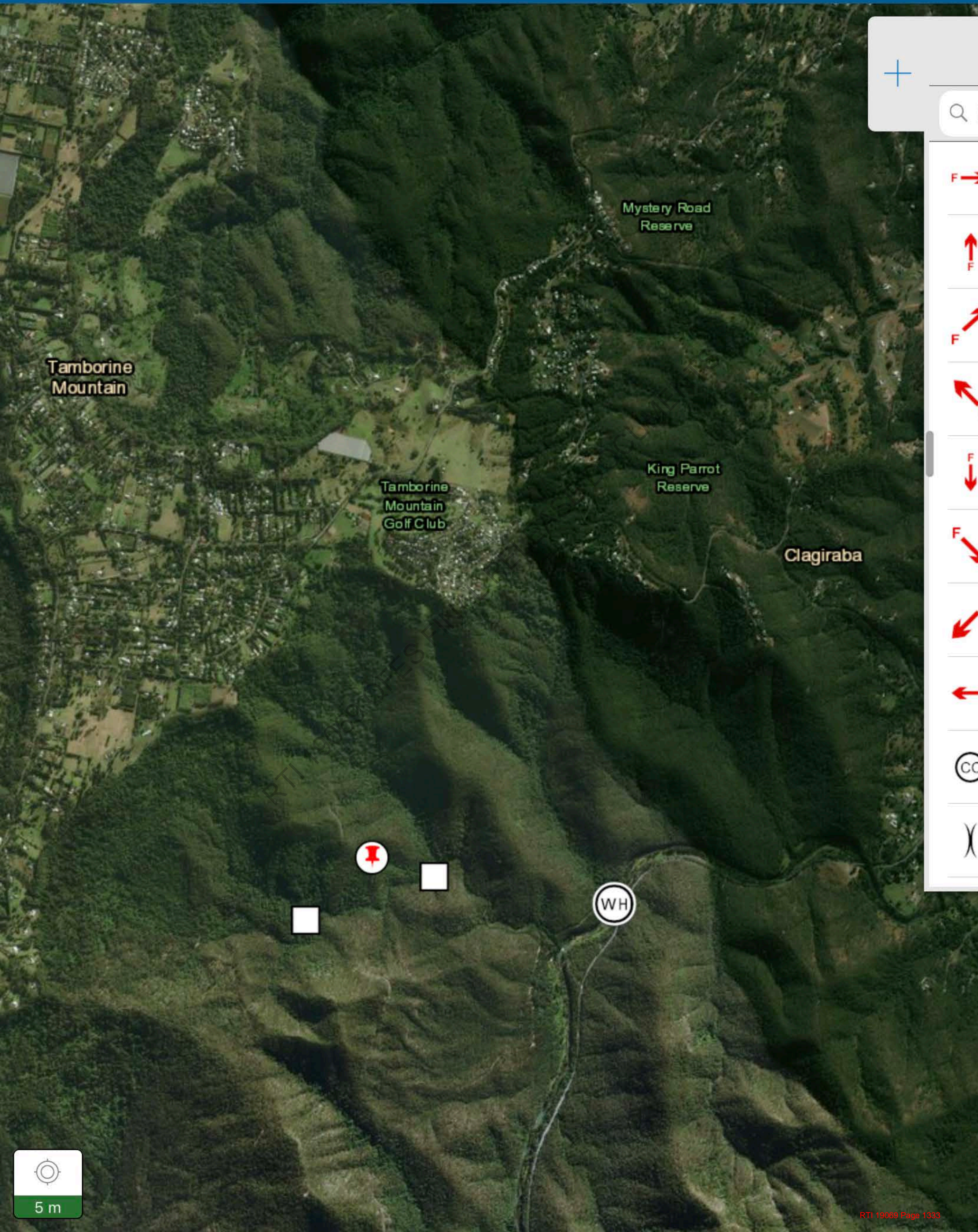
AAS Brad Barnes  
AOB Ben Macht

Sarabah Fire  
FB448

2019-09-12  
13:28:07+10:00



Maps



Q P









DIRECTION  
318 deg(T)

28.14913°S  
153.16237°E

ACCURACY 5 m  
DATUM WGS84



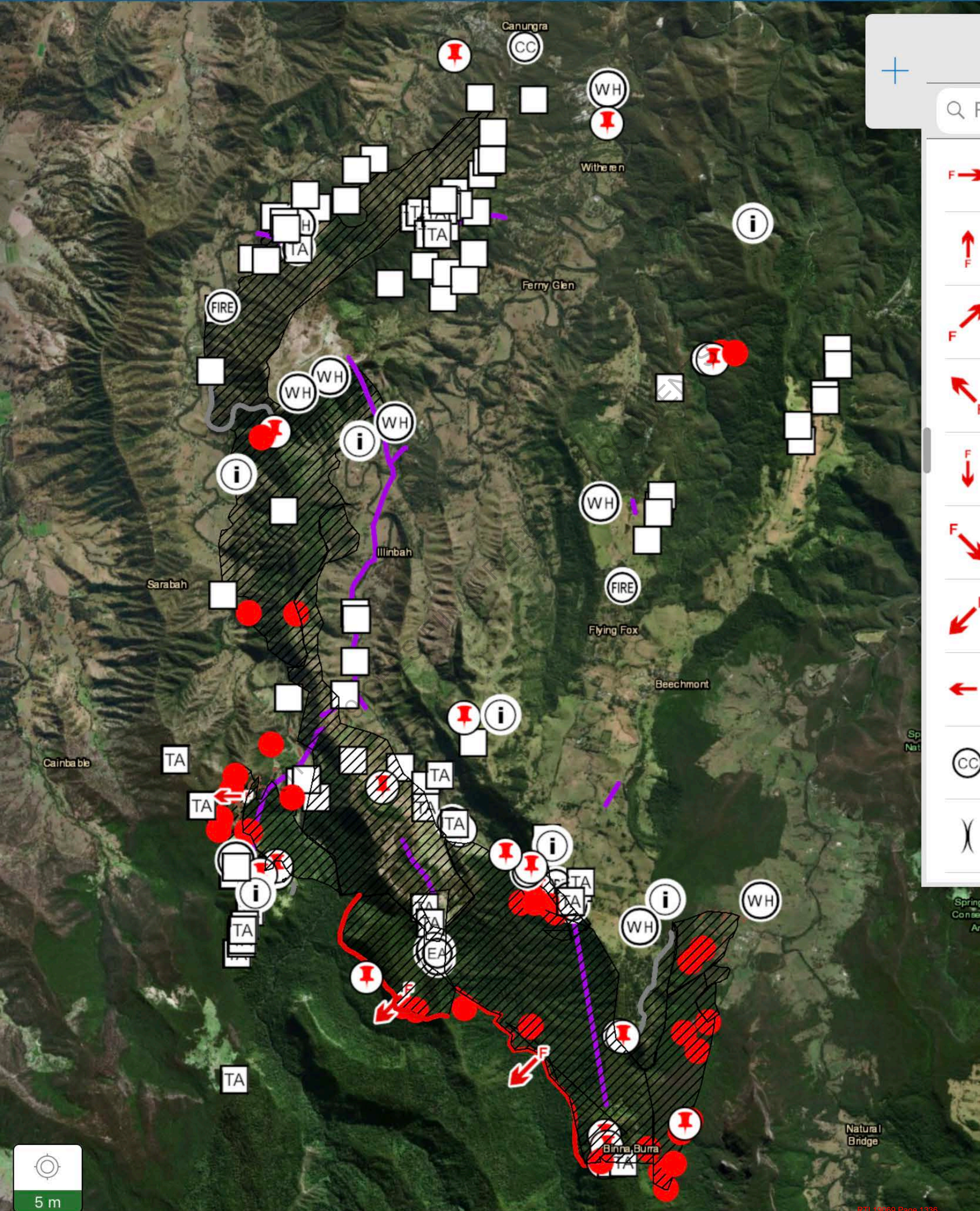
AAS Brad Barnes  
AOB Ben Macht

Sarabah Fire  
FB448

2019-09-12  
11:51:02+10:00



Maps



+

Q F

F →

↑ F

F ↗

↖ F

↓ F

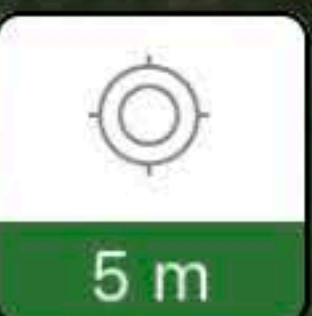
F ↘

← F

CC

X

Spring  
Conse  
Ar













DIRECTION  
212 deg(T)

28.06426°S  
153.21214°E

ACCURACY 5 m  
DATUM WGS84



AAS Brad Barnes  
AOB Ben Macht

Sarabah Fire –  
Defence Area...

2019-09-12  
09:39:52+10:00



DIRECTION  
318 deg(T)

28.14913°S  
153.16237°E

ACCURACY 5 m  
DATUM WGS84



AAS Brad Barnes  
AOB Ben Macht

Sarabah Fire  
FB448

2019-09-12  
11:51:02+10:00





NOT FOR FINAL USE - PLEASE DOCUMENT



DIRECTION  
49 deg(T)

28.15991°S  
153.17243°E

ACCURACY 5 m  
DATUM WGS84



RTI 190069 QFES FINAL RELEASE DOCUMENTS

AAS Brad Barnes  
AOB Ben Macht

Sarabah Fire –  
MacKenzie Rd...

2019-09-12  
15:17:17+10:00







DIRECTION  
329 deg(T)

28.15008°S  
153.16267°E

ACCURACY 5 m  
DATUM WGS84



© 11 19069 QFES FINAL RELEASE DOCUMENTS

AAS Brad Barnes  
A0B Ben Macht

Sarabah Fire  
FB448

2019-09-12  
11:50:59+10:00



DIRECTION  
295 deg(T)

28.19506°S  
153.19272°E

ACCURACY 5 m  
DATUM WGS84



AAS Brad Barnes  
AOB Ben Macht

Sarabah Fire –  
Alpaca Farm...

2019-09-12  
09:18:30+10:00



DIRECTION  
125 deg(T)

28.19551°S  
153.19091°E

ACCURACY 5 m  
DATUM WGS84



RTI 19069 QFES FINAL RELEASE DOCUMENTS

AAS Brad Barnes  
AOB Ben Macht

Sarabah Fire –  
Alpaca Farm...

2019-09-12  
08:54:18+10:00



DIRECTION  
54 deg(T)

28.15911°S  
153.17182°E

ACCURACY 5 m  
DATUM WGS84



AAS Brad Barnes  
AOB Ben Macht

Sarabah Fire  
FB448

2019-09-12  
11:12:56+10:00



DIRECTION  
208 deg(T)

28.20257°S  
153.20752°E

ACCURACY 5 m  
DATUM WGS84



AAS Brad Barnes  
AOB Ben Macht

Sarabah Fire  
FB448

2019-09-13  
10:50:23+10:00



DIRECTION  
191 deg(T)

28.19582°S  
153.18768°E

ACCURACY 10 m  
DATUM WGS84



AAS Brad Barnes  
AOB Ben Macht

Sarabah Fire  
FB448

2019-09-13  
11:14:03+10:00



DIRECTION  
112 deg(T)

28.14581°S  
153.10828°E

ACCURACY 5 m  
DATUM WGS84



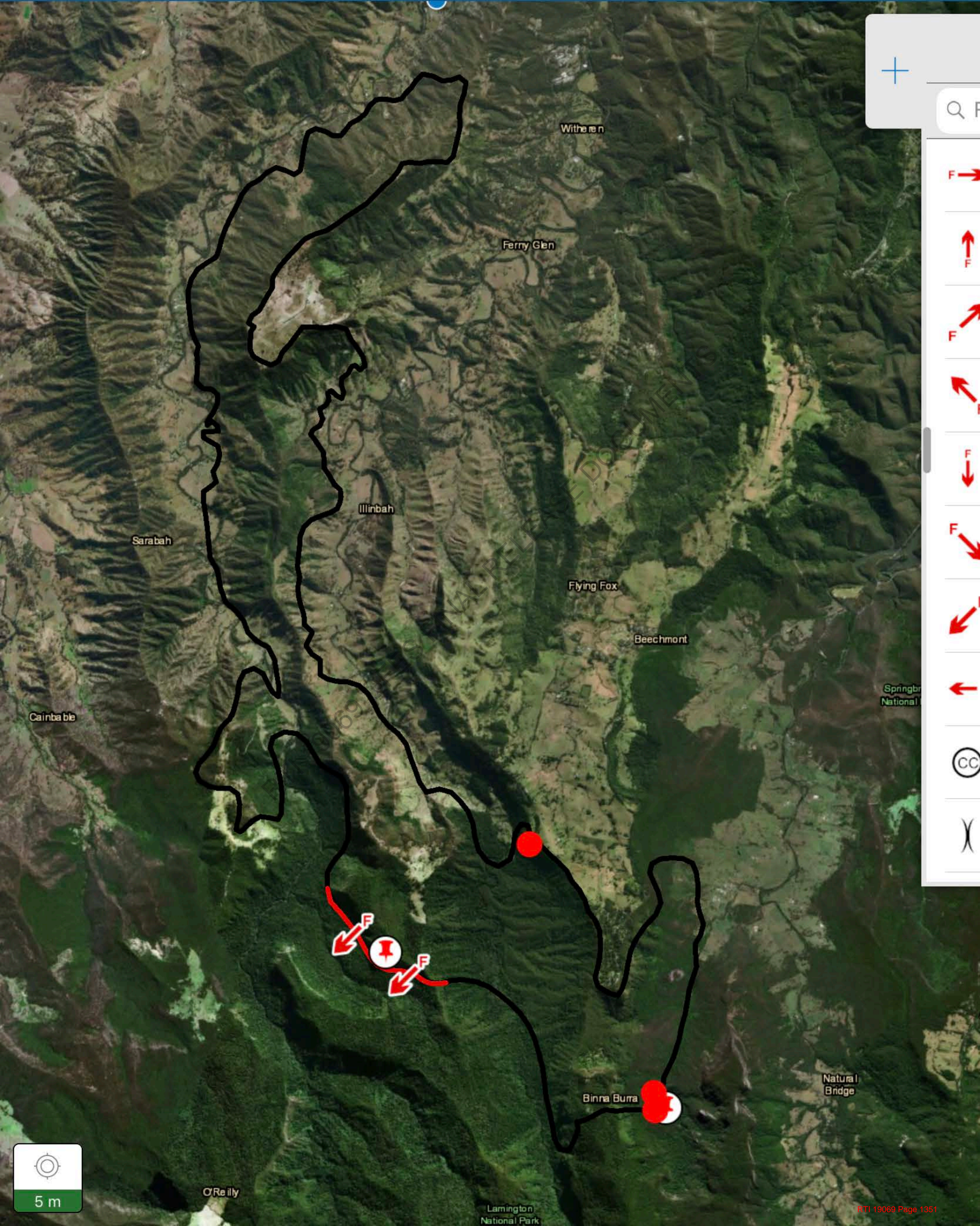
AAS Brad Barnes  
AOB Ben Macht

Sarabah Fire  
FB448

2019-09-13  
16:50:46+10:00



Maps



Q P



Wither n

Ferry Glen

Illinbah

Sarabah

Flying Fox

Beechmont

Cainba ble

Springbr  
National

Natural  
Bridge

Binna Burra

O'Reilly

Lamington  
National Park





DIRECTION  
108 deg(T)

28.17793°S  
153.18743°E

ACCURACY 5 m  
DATUM WGS84



AAS Brad Barnes  
A0B Ben Macht

Sarabah Fire  
FB448

2019-09-13  
11:00:07+10:00



DIRECTION  
126 deg(T)

28.19527°S  
153.18850°E

ACCURACY 10 m  
DATUM WGS84



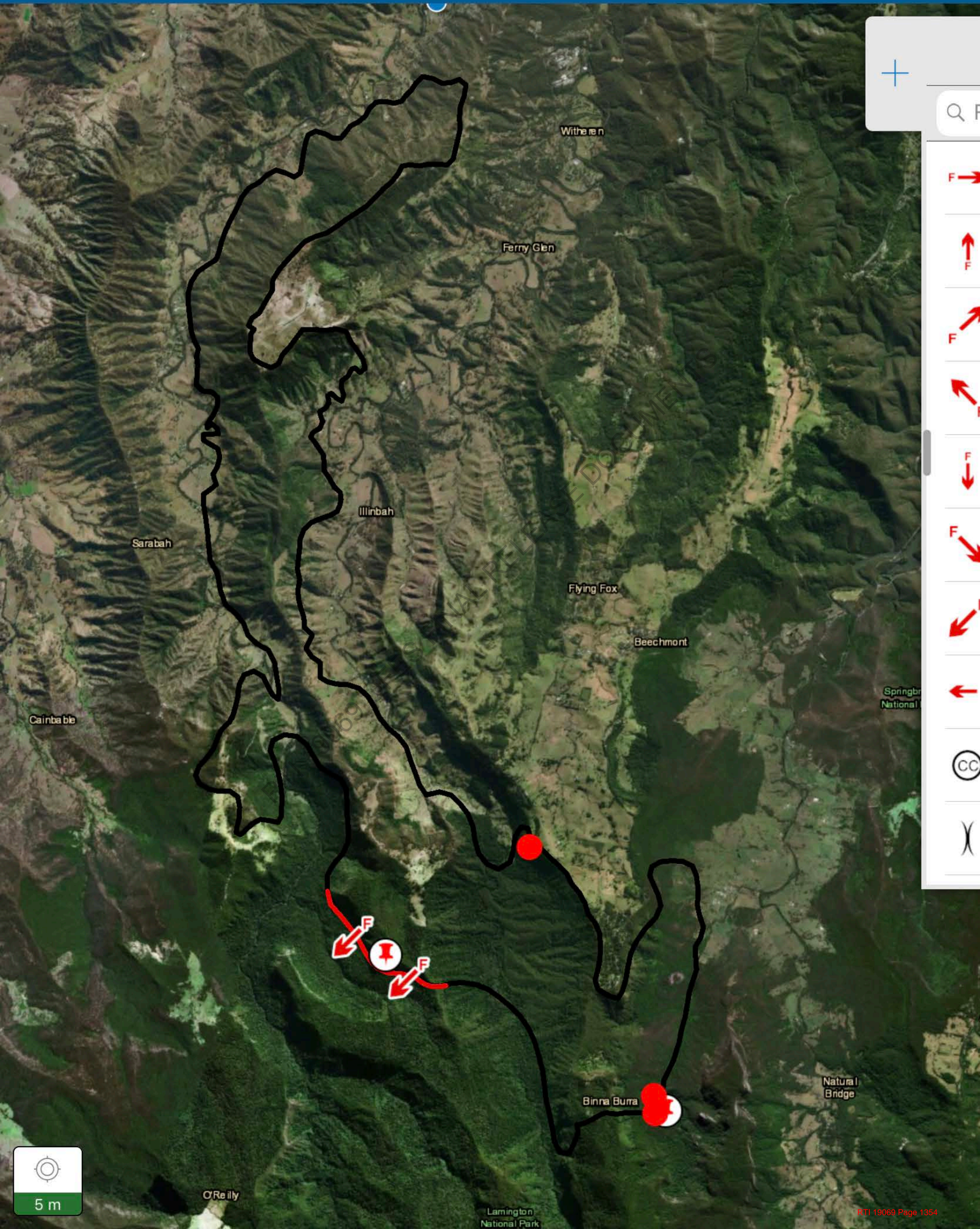
AAS Brad Barnes  
A0B Ben Macht

Sarabah Fire  
FB448

2019-09-13  
11:13:27+10:00



Maps



Q P



Wither n

Ferry Glen

Illinbah

Sarabah

Flying Fox

Beechmont

Cainba ble

Springbr  
National

Natural  
Bridge

Binna Burra

O'Reilly

Lamington  
National Park







WH

i

Pump

NTI 19069 QF  
ALL RELEASE DOCUMENTS

Sarabah  
Inhabitable



DIRECTION  
275 deg(T)

28.19015°S  
153.18937°E

ACCURACY 5 m  
DATUM WGS84



AAS Brad Barnes  
AOB Ben Macht

Sarabah Fire  
FB448

2019-09-13  
12:01:39+10:00







DIRECTION  
179 deg(T)

28.19579°S  
153.18801°E

ACCURACY 10 m  
DATUM WGS84



AAS Brad Barnes  
A0B Ben Macht

Sarabah Fire  
FB448

2019-09-13  
11:14:04+10:00



DIRECTION  
290 deg(T)

28.19044°S  
153.19073°E

ACCURACY 5 m  
DATUM WGS84



AAS Brad Barnes  
AOB Ben Macht

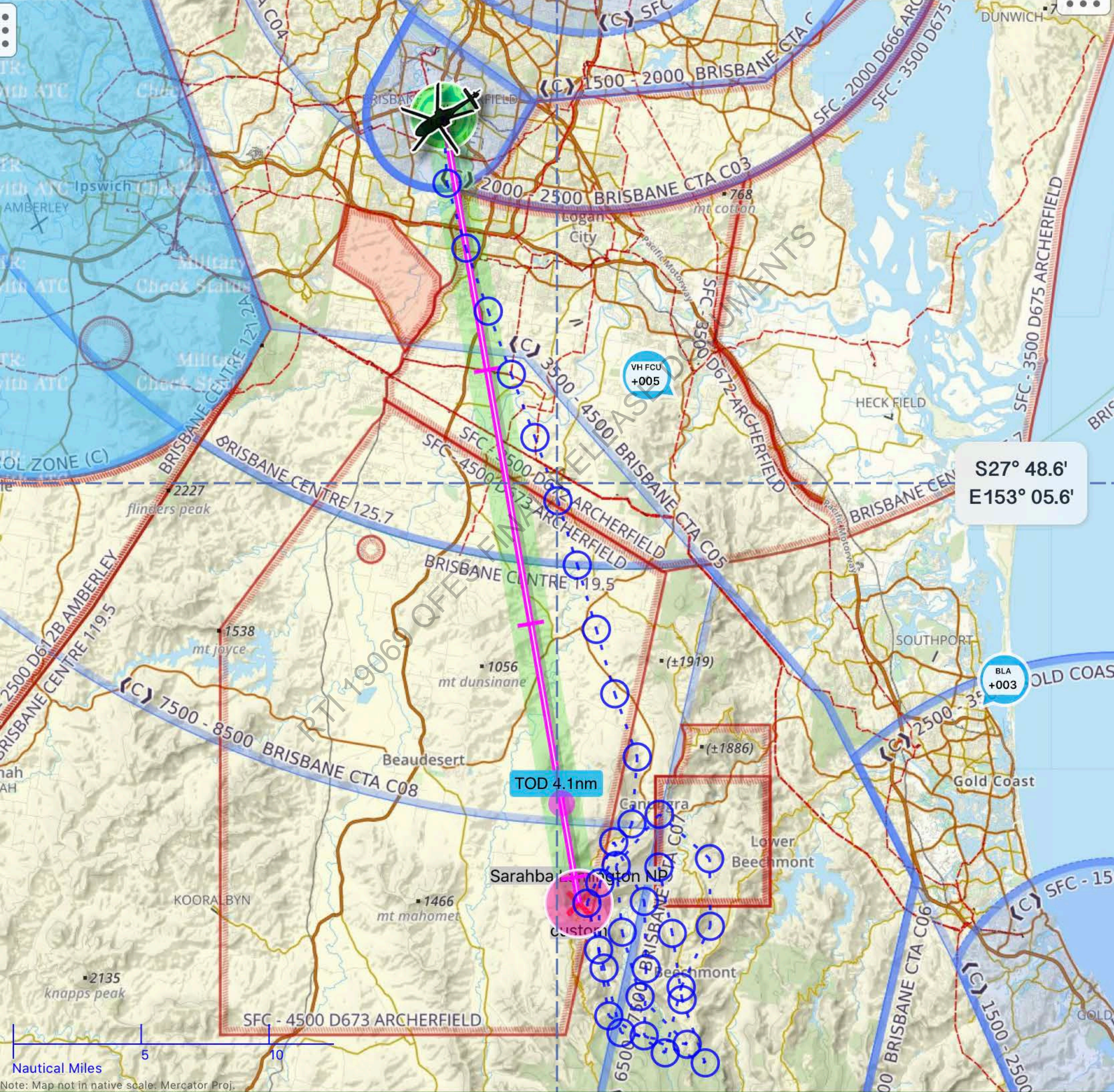
Sarabah Fire  
FB448

2019-09-13  
12:01:37+10:00



Flight 00:00:00 (0.0h)

GS --	TRK <b>237°M</b>	GPS ALT <b>69'</b>	UTC <b>07:15Z</b>	QNH [YBAF] <b>1021 hPa</b>	FIA/NXT BN 125.7 BN 121.2A (NXT)
DTG <b>31.0nm</b>	BRG (TO) <b>159°M</b>	ETE --	ETA --	<b>237°M</b>	<b>Cancel</b>





DIRECTION  
112 deg(T)

28.17753°S  
153.18768°E

ACCURACY 5 m  
DATUM WGS84



AAS Brad Barnes  
A0B Ben Macht

Sarabah Fire  
FB448

2019-09-13  
11:00:05+10:00



DIRECTION  
284 deg(T)

28.15338°S  
153.13198°E

ACCURACY 5 m  
DATUM WGS84



RTI 19069 QFES FINAL RELEASE DOCUMENTS

AAS Brad Barnes  
AOB Ben Macht

Sarabah Fire  
FB448

2019-09-13  
14:07:40+10:00



DIRECTION  
246 deg(T)

28.19467°S  
153.18490°E

ACCURACY 10 m  
DATUM WGS84



AAS Brad Barnes  
A0B Ben Macht

Sarabah Fire  
FB448

2019-09-13  
11:13:55+10:00



DIRECTION  
180 deg(T)

28.17794°S  
153.18786°E

ACCURACY 5 m  
DATUM WGS84



AAS Brad Barnes  
A0B Ben Macht

Sarabah Fire  
FB448

2019-09-13  
11:01:23+10:00



DIRECTION  
275 deg(T)

28.19015°S  
153.18937°E

ACCURACY 5 m  
DATUM WGS84



AAS Brad Barnes  
AOB Ben Macht

Sarabah Fire  
FB448

2019-09-13  
12:01:39+10:00





6.0063 kilometers



Done



Blue Creek

Pyramid Creek

Camagra Creek (Left Branch)

Kee laburra Creek

Lamington National Park

O'Reilly

Ferragulli Creek

Stockyard Creek

Bundoomba Creek

Rocky Creek

Warraboola Creek

Camagra Creek (Right Branch)

Kingakings Creek

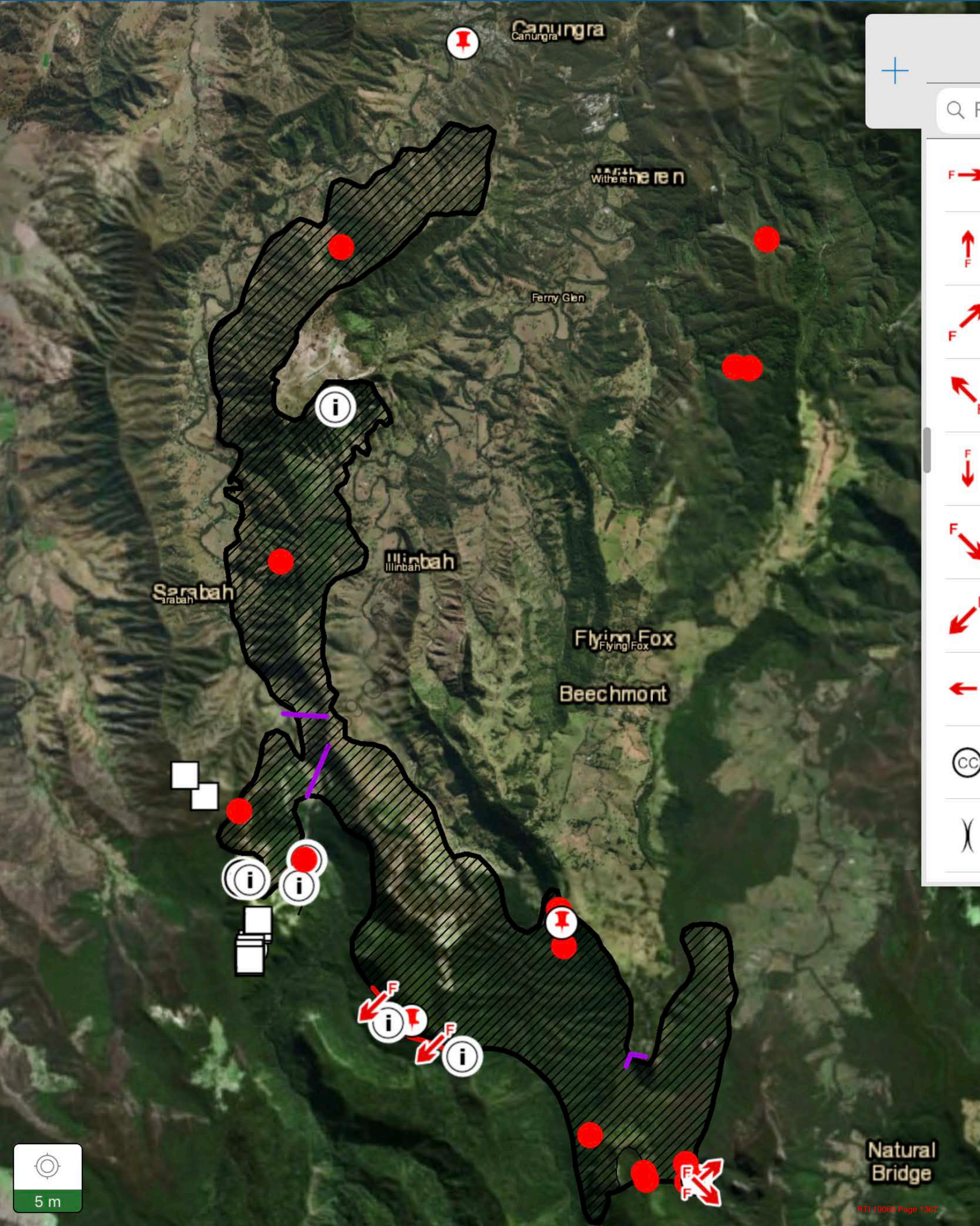
Tania Creek

6 km





Maps



Q P



Natural Bridge



DIRECTION  
248 deg(T)

28.19097°S  
153.18671°E

ACCURACY 5 m  
DATUM WGS84



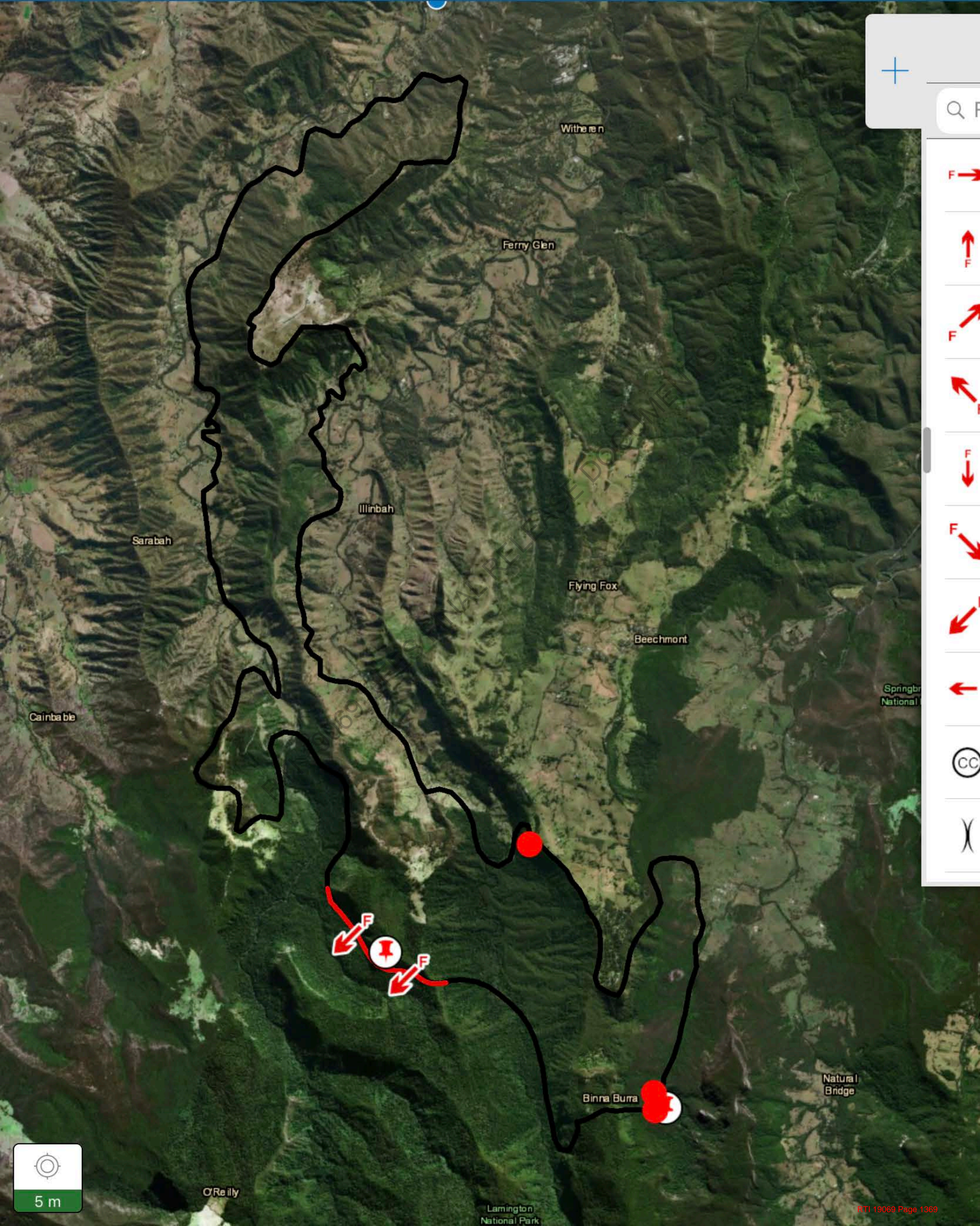
AAS Brad Barnes  
A0B Ben Macht

Sarabah Fire  
FB448

2019-09-13  
12:01:45+10:00



Maps



Q P



Wither n

Ferry Glen

Illinbah

Sarabah

Flying Fox

Beechmont

Cainba ble

Springbr  
National

Natural  
Bridge

Binna Burra

O'Reilly

Lamington  
National Park













DIRECTION  
246 deg(T)

28.19467°S  
153.18490°E

ACCURACY 10 m  
DATUM WGS84



AAS Brad Barnes  
A0B Ben Macht

Sarabah Fire  
FB448

2019-09-13  
11:13:55+10:00



DIRECTION  
173 deg(T)

28.19261°S  
153.20505°E

ACCURACY 5 m  
DATUM WGS84



AAS Brad Barnes  
AOB Ben Macht

Sarabah Fire  
FB448

2019-09-13  
10:58:31+10:00



DIRECTION  
164 deg(T)

28.13666°S  
153.11647°E

ACCURACY 5 m  
DATUM WGS84



AAS Brad Barnes  
A0B Ben Macht

Sarabah Fire  
FB448

2019-09-13  
16:50:12+10:00











DIRECTION  
126 deg(T)

28.19527°S  
153.18850°E

ACCURACY 10 m  
DATUM WGS84



AAS Brad Barnes  
A0B Ben Macht

Sarabah Fire  
FB448

2019-09-13  
11:13:27+10:00



DIRECTION  
238 deg(T)

28.17670°S  
153.19322°E

ACCURACY 12 m  
DATUM WGS84



AAS Brad Barnes  
A0B Ben Macht

Sarabah Fire  
FB448

2019-09-13  
11:01:00+10:00



DIRECTION  
174 deg(T)

28.19897°S  
153.20871°E

ACCURACY 5 m  
DATUM WGS84



AAS Brad Barnes  
AOB Ben Macht

Sarabah Fire  
FB448

2019-09-13  
10:50:31+10:00



DIRECTION  
174 deg(T)

28.19897°S  
153.20871°E

ACCURACY 5 m  
DATUM WGS84



AAS Brad Barnes  
AOB Ben Macht

Sarabah Fire  
FB448

2019-09-13  
10:50:31+10:00







DIRECTION  
248 deg(T)

28.19097°S  
153.18671°E

ACCURACY 5 m  
DATUM WGS84



AAS Brad Barnes  
A0B Ben Macht

Sarabah Fire  
FB448

2019-09-13  
12:01:45+10:00



DIRECTION  
179 deg(T)

28.19579°S  
153.18801°E

ACCURACY 10 m  
DATUM WGS84



AAS Brad Barnes  
A0B Ben Macht

Sarabah Fire  
FB448

2019-09-13  
11:14:04+10:00



DIRECTION  
56 deg(T)

28.15296°S  
153.11722°E

ACCURACY 5 m  
DATUM WGS84



AAS Brad Barnes  
A0B Ben Macht

Sarabah Fire  
FB448

2019-09-13  
14:49:43+10:00



DIRECTION  
92 deg(T)

28.19462°S  
153.18927°E

ACCURACY 10 m  
DATUM WGS84



AAS Brad Barnes  
AOB Ben Macht

Sarabah Fire  
FB448

2019-09-13  
11:13:30+10:00



DIRECTION  
123 deg(T)

28.13926°S  
153.11073°E

ACCURACY 5 m  
DATUM WGS84



AAS Brad Barnes  
A0B Ben Macht

Sarabah Fire  
FB448

2019-09-13  
16:50:27+10:00



DIRECTION  
63 deg(T)

28.15139°S  
153.11732°E

ACCURACY 5 m  
DATUM WGS84



AAS Brad Barnes  
A0B Ben Macht

Sarabah Fire  
FB448

2019-09-13  
15:33:43+10:00



DIRECTION  
161 deg(T)

28.14407°S  
153.12981°E

ACCURACY 5 m  
DATUM WGS84



AAS Brad Barnes  
A0B Ben Macht

Sarabah Fire  
FB448

2019-09-13  
14:05:58+10:00

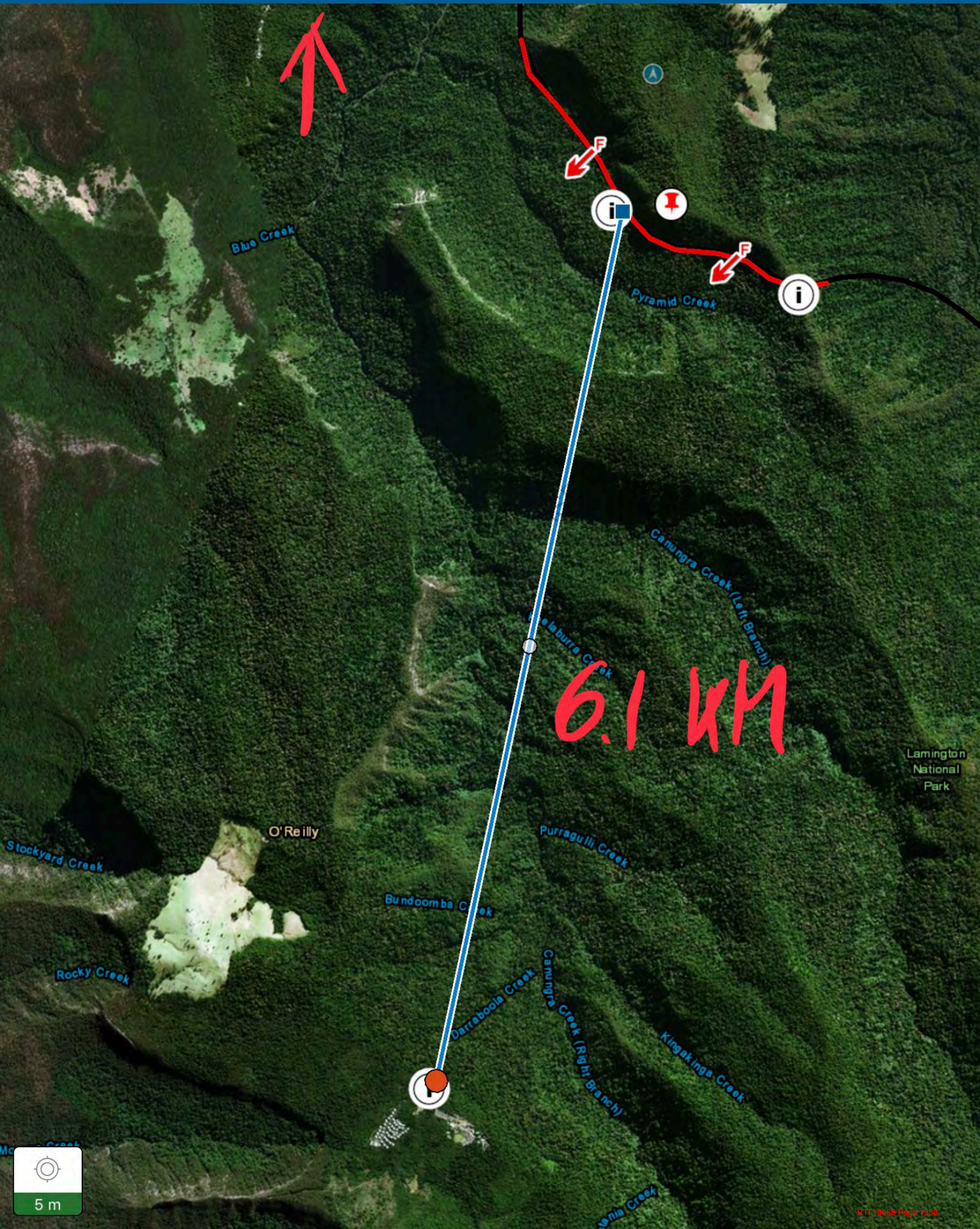




6.152 kilometers



Done



Blue Creek

Pyramid Creek

Camungra Creek (Left Branch)

6.1 KM

Lamington National Park

O'Reilly

Purragulli Creek

Stockyard Creek

Bundoomba Creek

Rocky Creek

Darraboola Creek

Camungra Creek (Right Branch)

Kingakings Creek





DIRECTION  
277 deg(T)

28.15198°S  
153.13439°E

ACCURACY 5 m  
DATUM WGS84



RTI 19069 QFES FINAL RELEASE DOCUMENTS

AAS Brad Barnes  
A0B Ben Macht

Sarabah Fire  
FB448

2019-09-13  
13:33:21+10:00



DIRECTION  
191 deg(T)

28.19582°S  
153.18768°E

ACCURACY 10 m  
DATUM WGS84



AAS Brad Barnes  
AOB Ben Macht

Sarabah Fire  
FB448

2019-09-13  
11:14:03+10:00



DIRECTION  
56 deg(T)

28.15296°S  
153.11722°E

ACCURACY 5 m  
DATUM WGS84



AAS Brad Barnes  
A0B Ben Macht

Sarabah Fire  
FB448

2019-09-13  
14:49:43+10:00



DIRECTION  
112 deg(T)

28.14581°S  
153.10828°E

ACCURACY 5 m  
DATUM WGS84



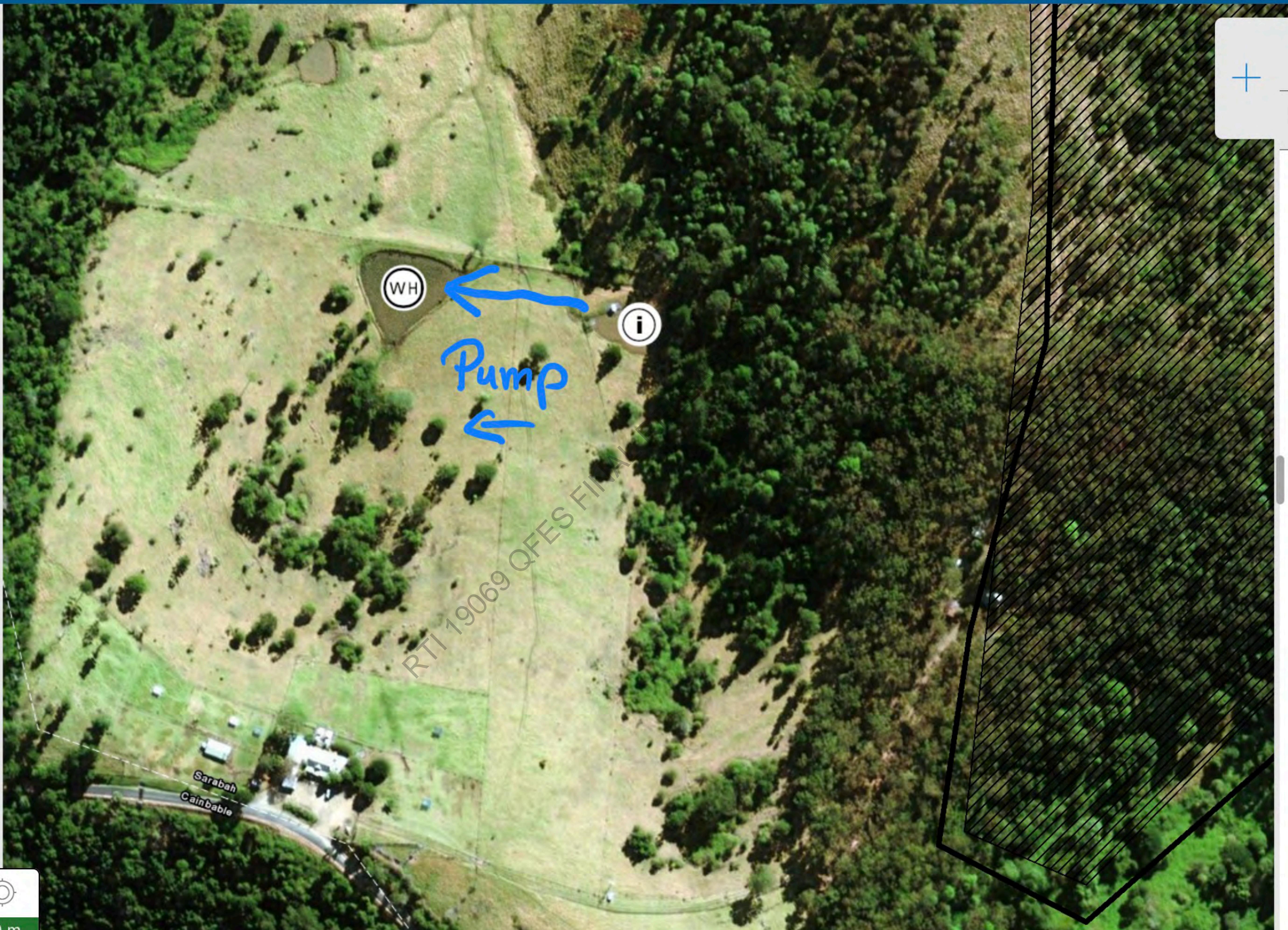
AAS Brad Barnes  
AOB Ben Macht

Sarabah Fire  
FB448

2019-09-13  
16:50:46+10:00



Maps



RTI 19069 QFES FILE

Sarabah  
Cainbale

WH

Pump









DIRECTION  
172 deg(T)

28.13875°S  
153.12866°E

ACCURACY 5 m  
DATUM WGS84



AAS Brad Barnes  
AOB Ben Macht

Sarabah Fire  
FB448

2019-09-13  
13:35:51+10:00





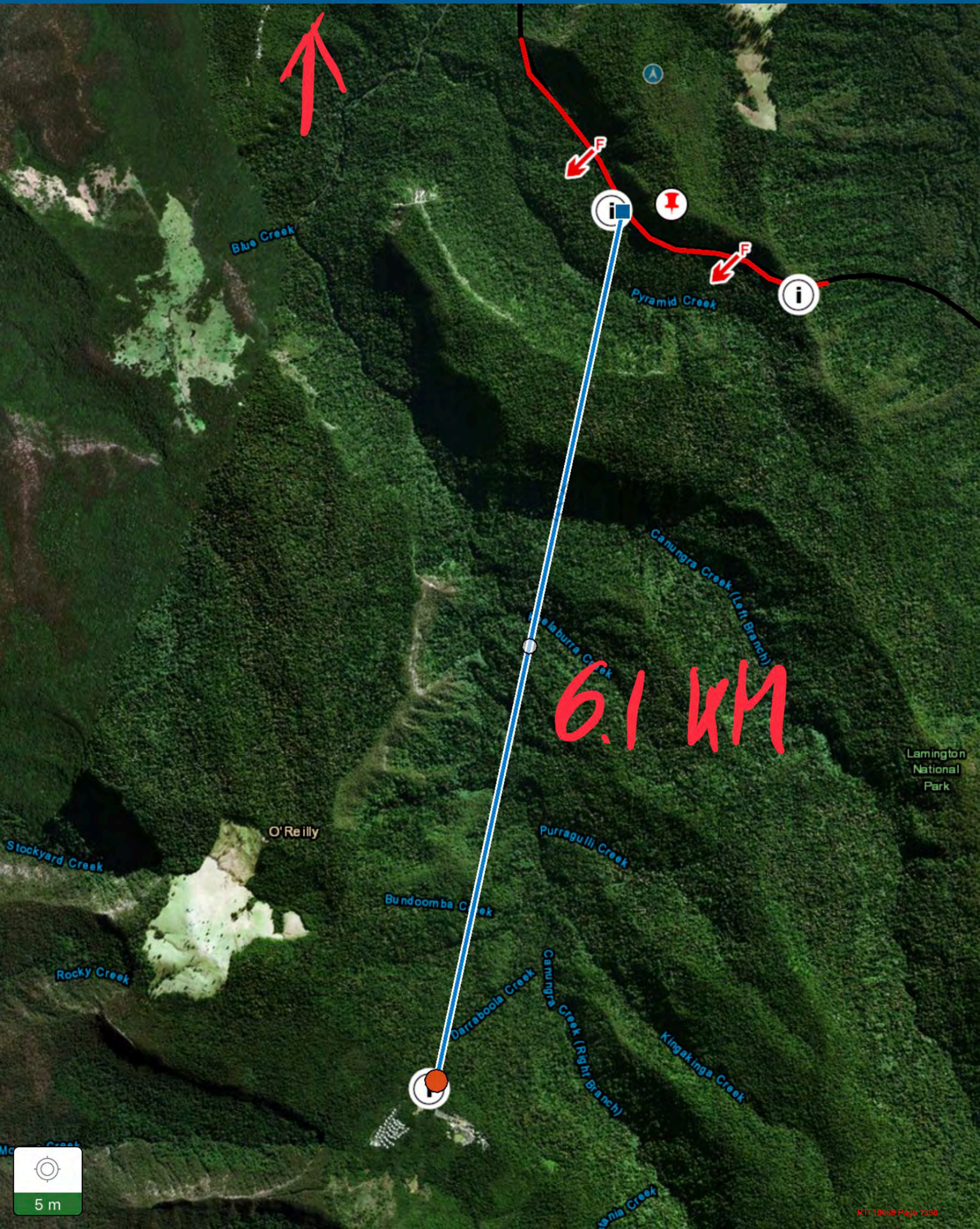




6.152 kilometers



Done



Blue Creek

Pyramid Creek

Camungra Creek (Left Branch)

6.1 KM

Lamington National Park

O'Reilly

Purragulli Creek

Stockyard Creek

Bundoomba Creek

Rocky Creek

Darraboola Creek

Camungra Creek (Right Branch)

Kingakings Creek







6.0063 kilometers



Done



6 km

Blue Creek

Pyramid Creek

Camugra Creek (Left Branch)

Kee laburra Creek

Ferragulli Creek

Bundoomba Creek

Warraboola Creek

Camugra Creek (Right Branch)

Kingakings Creek

Tania Creek

Lamington National Park

O'Reilly

Stockyard Creek

Rocky Creek

5 m



DIRECTION  
226 deg(T)

28.19244°S  
153.18465°E

ACCURACY 5 m  
DATUM WGS84



AAS Brad Barnes  
A0B Ben Macht

Sarabah Fire  
FB448

2019-09-13  
12:01:51+10:00