



RTI 19069 ORIGINAL RELEASE DOCUMENTS



DIRECTION  
155 deg(T)

28.17716°S  
153.18809°E

ACCURACY 5 m  
DATUM WGS84



AAS Brad Barnes  
A0B Ben Macht

Sarabah Fire  
FB448

2019-09-13  
11:03:50+10:00



DIRECTION  
119 deg(T)

28.17710°S  
153.18787°E

ACCURACY 10 m  
DATUM WGS84



AAS Brad Barnes  
A0B Ben Macht

Sarabah Fire  
FB448

2019-09-13  
11:00:03+10:00



DIRECTION  
303 deg(T)

28.19080°S  
153.19213°E

ACCURACY 5 m  
DATUM WGS84



AAS Brad Barnes  
A0B Ben Macht

Sarabah Fire  
FB448

2019-09-13  
12:01:33+10:00



DIRECTION  
180 deg(T)

28.17794°S  
153.18786°E

ACCURACY 5 m  
DATUM WGS84



AAS Brad Barnes  
A0B Ben Macht

Sarabah Fire  
FB448

2019-09-13  
11:01:23+10:00

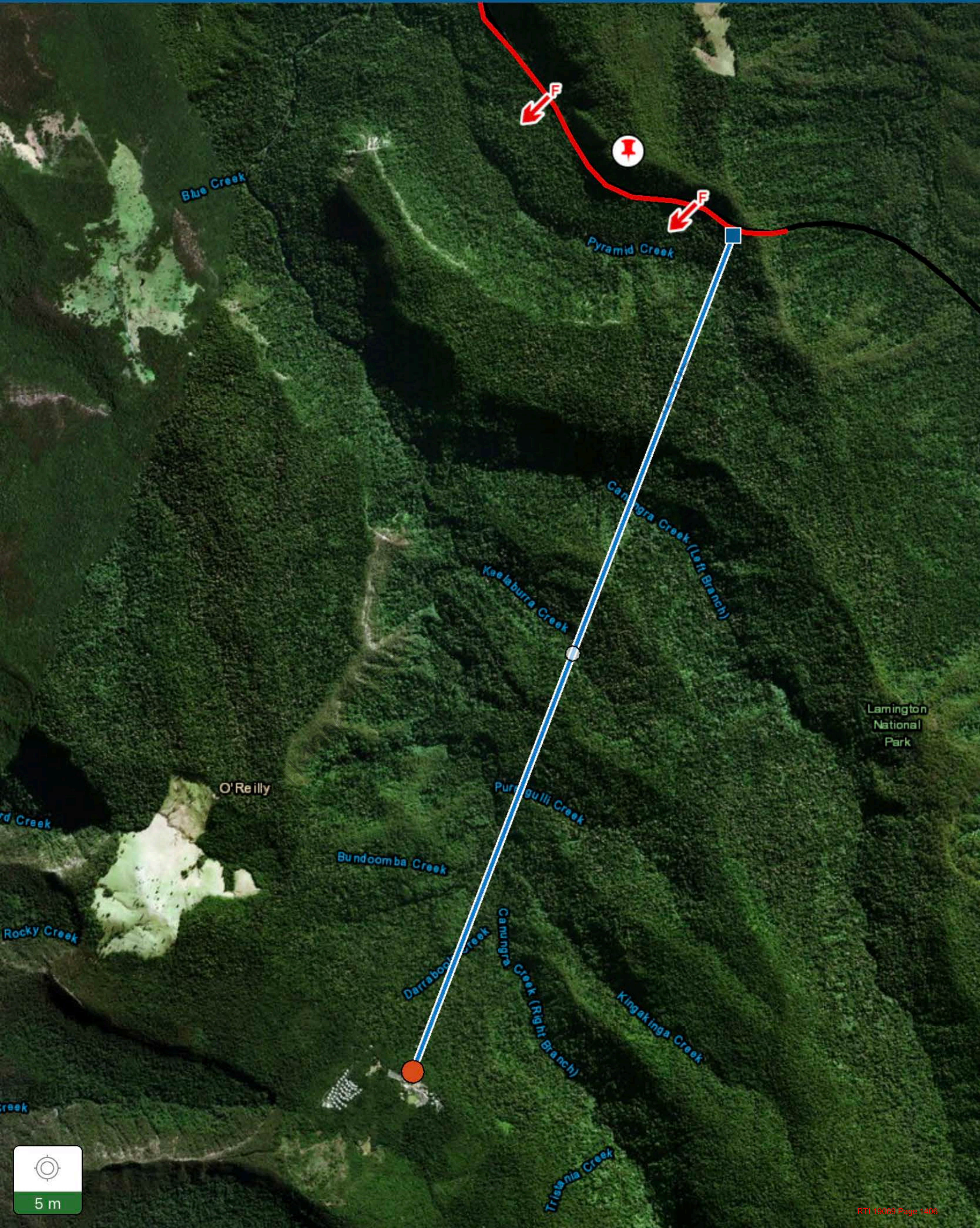




6.1065 kilometers



Done



Blue Creek

Pyramid Creek

Canungra Creek (Left Branch)

Kae laburra Creek

Purrigulli Creek

Bundoomba Creek

Darraboon Creek

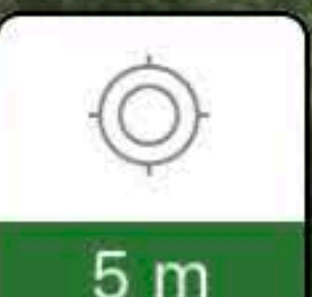
Camungra Creek (Right Branch)

Kingakinga Creek

Tristania Creek

Lamington National Park

O'Reilly



5 m



DIRECTION  
172 deg(T)

28.13875°S  
153.12866°E

ACCURACY 5 m  
DATUM WGS84



AAS Brad Barnes  
AOB Ben Macht

Sarabah Fire  
FB448

2019-09-13  
13:35:51+10:00



DIRECTION  
174 deg(T)

28.13645°S  
153.12033°E

ACCURACY 5 m  
DATUM WGS84



RTI 19069 QFES FINAL RELEASE DOCUMENTS

AAS Brad Barnes  
AOB Ben Macht

Sarabah Fire  
FB448

2019-09-13  
16:50:03+10:00



DIRECTION  
160 deg(T)

28.17538°S  
153.19521°E

ACCURACY 100 m  
DATUM WGS84



AAS Brad Barnes  
A0B Ben Macht

Sarabah Fire  
FB448

2019-09-13  
11:03:38+10:00









RTI 19063 OFFICIAL RELEASE DOCUMENT







DIRECTION  
71 deg(T)

28.14820°S  
153.17262°E

ACCURACY 10 m  
DATUM WGS84



RTI 19069 QFES FINAL RELEASE DOCUMENTS

AAS Jason Ryan  
A0B Ben Macht

Sarabah Fire  
FB448

2019-09-14  
08:45:05+10:00









RTI 19069 Page 1415



DIRECTION  
224 deg(T)

28.18205°S  
153.16582°E

ACCURACY 5 m  
DATUM WGS84



RTI 19069 QFES FINAL RELEASE DOCUMENTS

AAS Jason Ryan  
AOB Ben Macht

Sarabah Fire  
FB448

2019-09-14  
10:52:30+10:00



DIRECTION  
72 deg(T)

28.07304°S  
153.21663°E

ACCURACY 5 m  
DATUM WGS84



AAS Jason Ryan  
A0B Ben Macht

New hotspot –  
Lower Beechmont...

2019-09-14  
13:25:17+10:00



DIRECTION  
194 deg(T)

28.06482°S  
153.22506°E

ACCURACY 30 m  
DATUM WGS84



AAS Jason Ryan  
A0B Ben Macht

New hotspot –  
Lower Beechmont...

2019-09-14  
13:20:33+10:00



DIRECTION  
32 deg(T)

28.07506°S  
153.21913°E

ACCURACY 5 m  
DATUM WGS84



RTI 19069 QFES FINAL RELEASE DOCUMENTS

AAS Jason Ryan  
AOB Ben Macht

New hotspot –  
Lower Beechmont  
FB448

2019-09-14  
13:25:25+10:00



DIRECTION  
75 deg(T)

28.17459°S  
153.14507°E

ACCURACY 5 m  
DATUM WGS84



RTI 19069 QFES FINAL RELEASE DOCUMENTS

AAS Jason Ryan  
AOB Ben Macht

Sarabah Fire  
FB448

2019-09-14  
10:51:32+10:00



DIRECTION  
241 deg(T)

28.16577°S  
153.16779°E

ACCURACY 5 m  
DATUM WGS84



RTI 19069 QFES FINAL RELEASE DOCUMENTS

AAS Jason Ryan  
AOB Ben Macht

Sarabah Fire  
FB448

2019-09-14  
16:02:42+10:00







DIRECTION  
122 deg(T)

28.19526°S  
153.19336°E

ACCURACY 5 m  
DATUM WGS84



RTI 19069 QFES FINAL RELEASE DOCUMENTS

AAS Jason Ryan  
AOB Ben Macht

Sarabah Fire  
FB448

2019-09-14  
10:17:22+10:00



DIRECTION  
358 deg(T)

28.20267°S  
153.20674°E

ACCURACY 5 m  
DATUM WGS84



RTI 19069 QFES FINAL RELEASE DOCUMENTS

AAS Jason Ryan  
A0B Ben Macht

Sarabah Fire  
FB448

2019-09-14  
10:18:09+10:00



DIRECTION  
307 deg(T)

28.04652°S  
153.22168°E

ACCURACY 5 m  
DATUM WGS84



AAS Jason Ryan  
AOB Ben Macht

Sarabah Fire  
FB448

2019-09-14  
11:55:11+10:00





RTI 19069 Page 1426



DIRECTION  
182 deg(T)

28.06424°S  
153.21945°E

ACCURACY 5 m  
DATUM WGS84



AAS Jason Ryan  
AOB Ben Macht

New hotspot –  
Lower Beechmont  
FB448

2019-09-14  
13:23:25+10:00



DIRECTION  
59 deg(T)

28.20382°S  
153.20150°E

ACCURACY 5 m  
DATUM WGS84



RTI 19069 QFES FINAL RELEASE DOCUMENTS

AAS Jason Ryan  
AOB Ben Macht

Sarabah Fire  
FB448

2019-09-14  
14:51:07+10:00



DIRECTION  
257 deg(T)

28.18970°S  
153.19304°E

ACCURACY 5 m  
DATUM WGS84



AAS Jason Ryan  
AOB Ben Macht

Sarabah Fire  
FB448

2019-09-14  
09:36:34+10:00





FINAL RELEASE



DIRECTION  
312 deg(T)

28.20409°S  
153.20662°E

ACCURACY 5 m  
DATUM WGS84



RTI 19069 QFES FINAL RELEASE DOCUMENTS

AAS Jason Ryan  
AOB Ben Macht

Sarabah Fire  
FB448

2019-09-14  
10:34:39+10:00





QFES FINANCE LEASE DOC





OFFES FINAL RELEASE DOC



DIRECTION  
176 deg(T)

28.17465°S  
153.19491°E

ACCURACY 5 m  
DATUM WGS84



RTI 19069 CFES FINAL RELEASE DOCUMENTS

AAS Jason Ryan  
AOB Ben Macht

Sarabah Fire  
FB448

2019-09-14  
10:16:28+10:00







DIRECTION  
37 deg(T)

28.20575°S  
153.19074°E

ACCURACY 5 m  
DATUM WGS84



RTI 19069 QFES FINAL RELEASE DOCUMENTS

AAS Jason Ryan  
AOB Ben Macht

Sarabah Fire  
FB448

2019-09-14  
16:00:01+10:00



DIRECTION  
212 deg(T)

28.19965°S  
153.20743°E

ACCURACY 30 m  
DATUM WGS84



RTI 19069 QFES FINAL RELEASE DOCUMENTS

AAS Jason Ryan  
AOB Ben Macht

Sarabah Fire  
FB448

2019-09-14  
08:34:47+10:00



FINAL RELEASE D





DIRECTION  
334 deg(T)

28.17464°S  
153.19114°E

ACCURACY 10 m  
DATUM WGS84



AAS Jason Ryan  
A0B Ben Macht

Sarabah Fire  
FB448

2019-09-14  
08:39:31+10:00



DIRECTION  
233 deg(T)

28.14529°S  
153.14156°E

ACCURACY 5 m  
DATUM WGS84



AAS Jason Ryan  
AOB Steve James

Alpaca  
FB448

2019-09-16  
11:59:36+10:00



DIRECTION  
191 deg(T)

28.19582°S  
153.18768°E

ACCURACY 10 m  
DATUM WGS84



AAS Brad Barnes  
A0B Ben Macht

Sarabah Fire  
FB448

2019-09-13  
11:14:03+10:00



Maps



FIRE

FIRE

RTI





DIRECTION  
92 deg(T)

28.19462°S  
153.18927°E

ACCURACY 10 m  
DATUM WGS84



AAS Brad Barnes  
AOB Ben Macht

Sarabah Fire  
FB448

2019-09-13  
11:13:30+10:00



DIRECTION  
233 deg(T)

28.14529°S  
153.14156°E

ACCURACY 5 m  
DATUM WGS84



AAS Jason Ryan  
AOB Steve James

Alpaca  
FB448

2019-09-16  
11:59:36+10:00



DIRECTION  
179 deg(T)

28.19579°S  
153.18801°E

ACCURACY 10 m  
DATUM WGS84



AAS Brad Barnes  
A0B Ben Macht

Sarabah Fire  
FB448

2019-09-13  
11:14:04+10:00



DIRECTION  
179 deg(T)

28.19579°S  
153.18801°E

ACCURACY 10 m  
DATUM WGS84



AAS Brad Barnes  
A0B Ben Macht

Sarabah Fire  
FB448

2019-09-13  
11:14:04+10:00



DIRECTION  
198 deg(T)

28.14727°S  
153.14051°E

ACCURACY 10 m  
DATUM WGS84



AAS Brad Barnes  
AOB Steve James

Alpaca  
FB448

2019-09-17  
08:34:20+10:00



DIRECTION  
161 deg(T)

28.13645°S  
153.13167°E

ACCURACY 5 m  
DATUM WGS84



RTI 19069 QFES FINAL RELEASE DOCUMENTS

AAS Brad Barnes  
AOB Steve James

Alpaca  
FB448

2019-09-17  
11:39:32+10:00



DIRECTION  
13 deg(T)

28.15949°S  
153.13131°E

ACCURACY 5 m  
DATUM WGS84



RTI 19069 QFES FINAL RELEASE DOCUMENTS

AAS Brad Barnes  
AOB Steve James

Alpaca  
FB448

2019-09-17  
14:06:29+10:00



DIRECTION  
238 deg(T)

28.15021°S  
153.13600°E

ACCURACY 5 m  
DATUM WGS84



RTI 19069 QFES FINAL RELEASE DOCUMENTS

AAS Brad Barnes  
AOB Steve James

Alpaca  
FB448

2019-09-17  
12:45:19+10:00



DIRECTION  
296 deg(T)

28.15634°S  
153.13767°E

ACCURACY 10 m  
DATUM WGS84



AAS Brad Barnes  
AOB Steve James

Alpaca  
FB448

2019-09-17  
12:44:38+10:00



DIRECTION  
198 deg(T)

28.14727°S  
153.14051°E

ACCURACY 10 m  
DATUM WGS84



AAS Brad Barnes  
AOB Steve James

Alpaca  
FB448

2019-09-17  
08:34:20+10:00



DIRECTION  
183 deg(T)

28.14701°S  
153.13500°E

ACCURACY 5 m  
DATUM WGS84



RTI 19069 QFES FINAL RELEASE DOCUMENT

AAS Brad Barnes  
AOB Steve James

Alpaca  
FB448

2019-09-17  
11:43:29+10:00



DIRECTION  
265 deg(T)

28.15361°S  
153.13979°E

ACCURACY 5 m  
DATUM WGS84



RTI 19069 QFES FINAL RELEASE DOCUMENTS

FB 448 Canungra/  
Beechmont

AAS Brad Barnes  
A0B Steve James

2019-09-17  
11:58:54+10:00



DIRECTION  
161 deg(T)

28.13645°S  
153.13167°E

ACCURACY 5 m  
DATUM WGS84



RTI 19069 QFES FINAL RELEASE DOCUMENTS

AAS Brad Barnes  
AOB Steve James

Alpaca  
FB448

2019-09-17  
11:39:32+10:00



DIRECTION  
148 deg(T)

28.14987°S  
153.13169°E

ACCURACY 5 m  
DATUM WGS84



RTI 19069 QFES FINAL RELEASE DOCUMENTS

AAS Brad Barnes  
AOB Steve James

Alpaca  
FB448

2019-09-17  
11:49:17+10:00

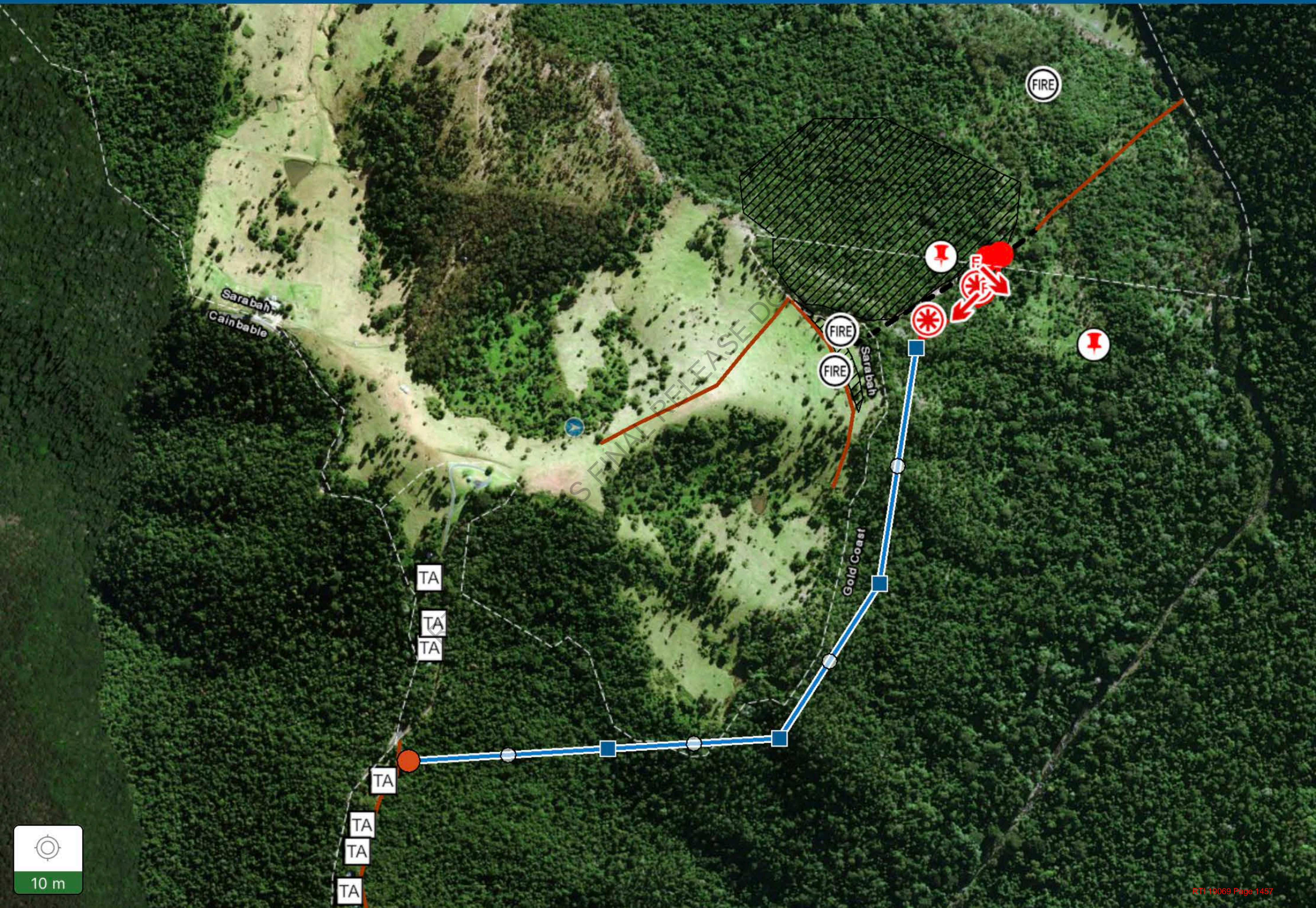




1.4873 kilometers



Done





DIRECTION  
145 deg(T)

28.14425°S  
153.12391°E

ACCURACY 5 m  
DATUM WGS84



AAS Brad Barnes  
AOB Steve James

Alpaca  
FB448

2019-09-17  
11:40:10+10:00



DIRECTION  
182 deg(T)

28.15086°S  
153.13112°E

ACCURACY 5 m  
DATUM WGS84



AAS Brad Barnes  
AOB Steve James

Alpaca  
FB448

2019-09-17  
11:56:16+10:00

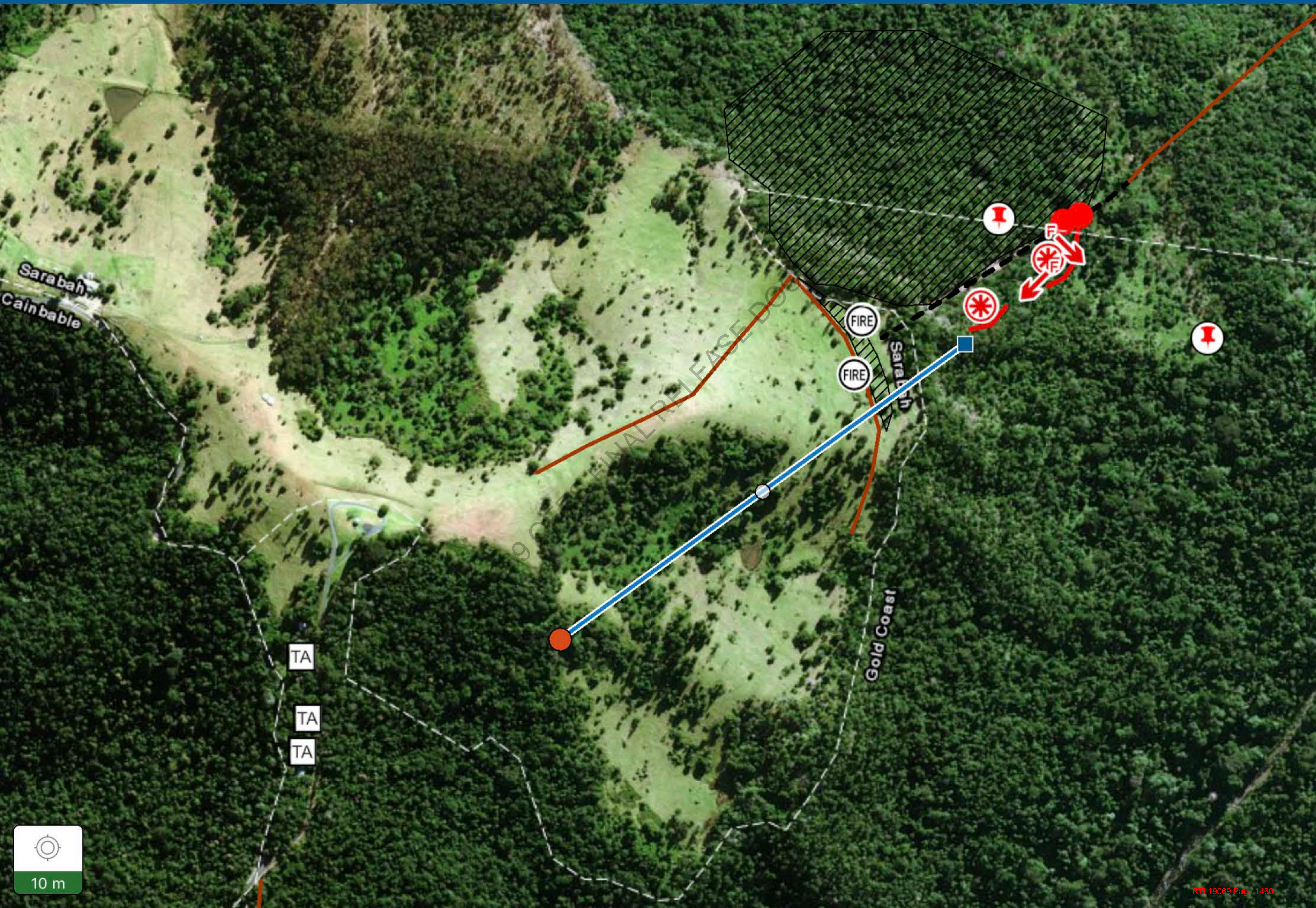




0.68934 kilometers



Done



9 SEP 2015 FINAL RELEASE DOCUMENT





DIRECTION  
148 deg(T)

28.14987°S  
153.13169°E

ACCURACY 5 m  
DATUM WGS84



RTI 19069 QFES FINAL RELEASE DOCUMENTS

AAS Brad Barnes  
AOB Steve James

Alpaca  
FB448

2019-09-17  
11:49:17+10:00



DIRECTION  
182 deg(T)

28.15086°S  
153.13112°E

ACCURACY 5 m  
DATUM WGS84



RTI 49069 QFES FINAL RELEASE DOCUMENTS

AAS Brad Barnes  
AOB Steve James

Alpaca  
FB448

2019-09-17  
11:56:16+10:00





Flight 00:14:25 (0.2h)

GS

79kts

TRK

131°M

GPS ALT

3297'

UTC

04:15Z

QNH [YBCG]

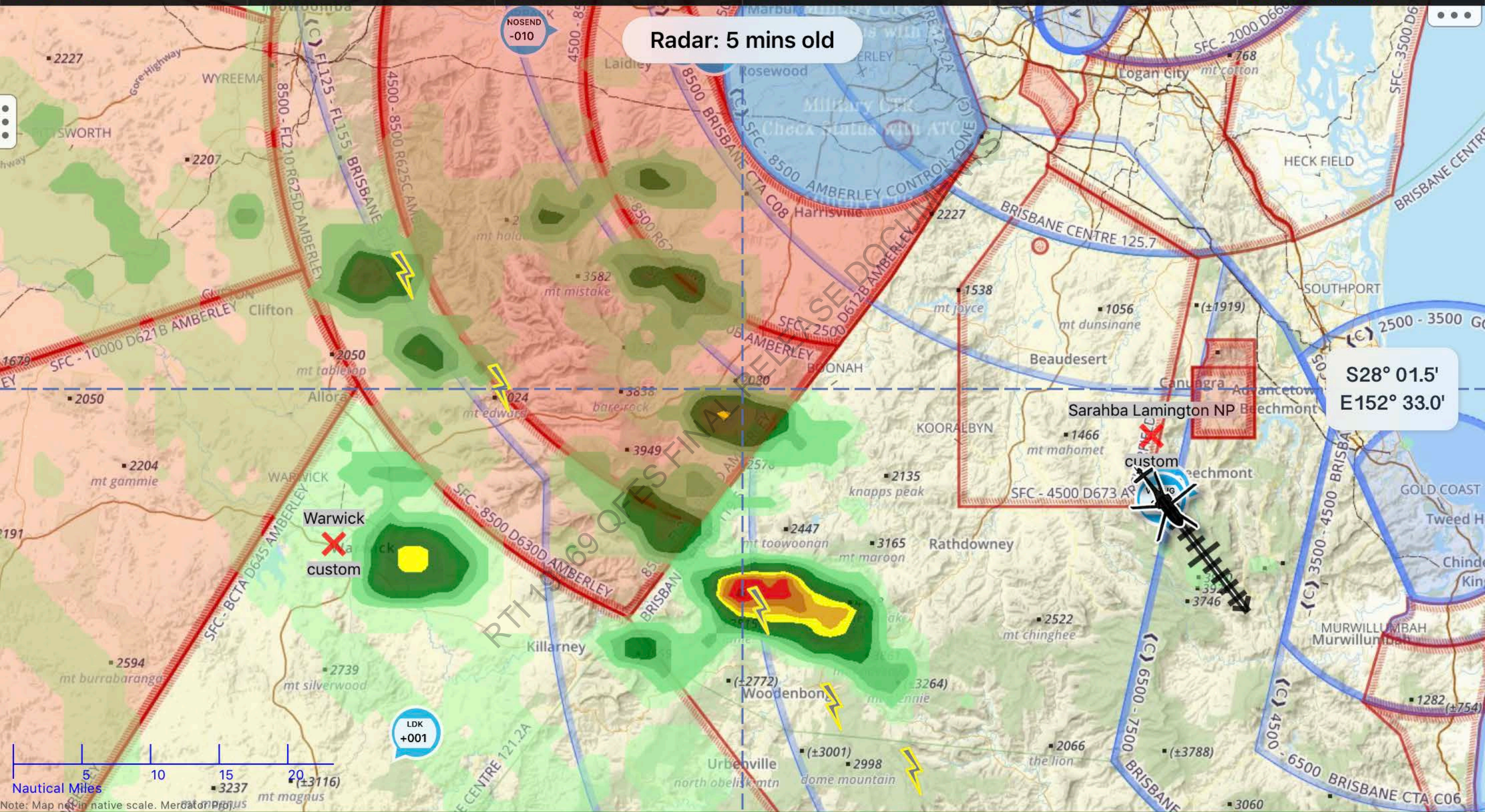
1015 hPa

FIA/NXT

BN 119.5  
BN 134.3 (NXT)

Radar: 5 mins old

S28° 01.5'  
E152° 33.0'



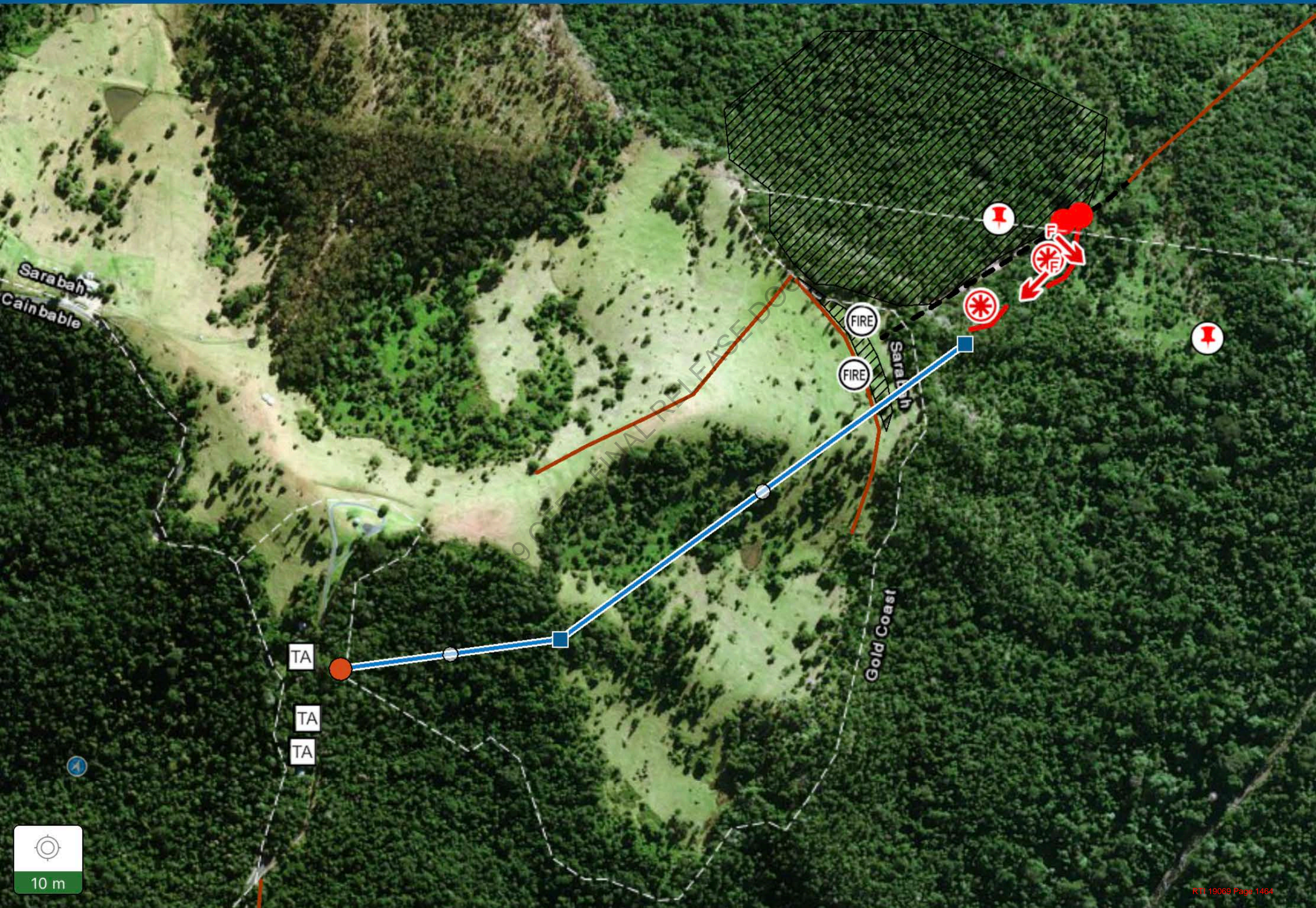




0.99481 kilometers



Done



9 SEP 2015 FINAL RELEASE DOCUMENT





DIRECTION  
290 deg(T)

28.14825°S  
153.14168°E

ACCURACY 200 m  
DATUM WGS84



AAS Brad Barnes  
AOB Steve James

Alpaca  
FB448

2019-09-17  
11:41:57+10:00



DIRECTION  
182 deg(T)

28.15086°S  
153.13112°E

ACCURACY 5 m  
DATUM WGS84



AAS Brad Barnes  
AOB Steve James

Alpaca  
FB448

2019-09-17  
11:56:16+10:00



DIRECTION  
182 deg(T)

28.15086°S  
153.13112°E

ACCURACY 5 m  
DATUM WGS84



AAS Brad Barnes  
AOB Steve James

Alpaca  
FB448

2019-09-17  
11:56:16+10:00





Flight 00:23:51 (0.4h)

GS

3kts

TRK

143°M

GPS ALT

366'

UTC

04:43Z

QNH [YBCG]

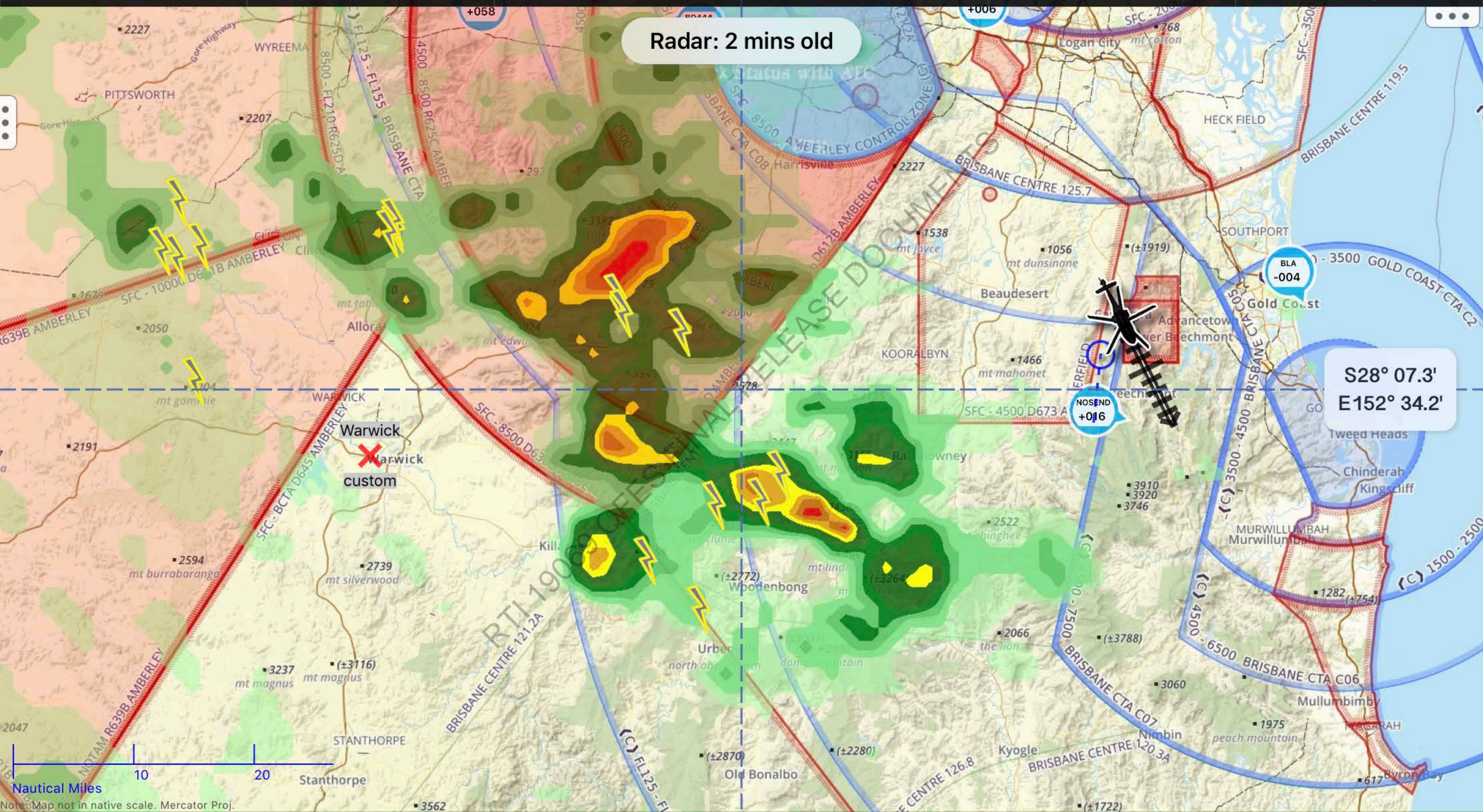
1015 hPa

FIA/NXT

BN 119.5  
BN 134.3 (NXT)

Radar: 2 mins old

S28° 07.3'  
E152° 34.2'



Nautical Miles

Note: Map not in native scale. Mercator Proj.



Maps

ScratchPad

Airfields

Documents

Brief

Settings



DIRECTION  
145 deg(T)

28.14425°S  
153.12391°E

ACCURACY 5 m  
DATUM WGS84



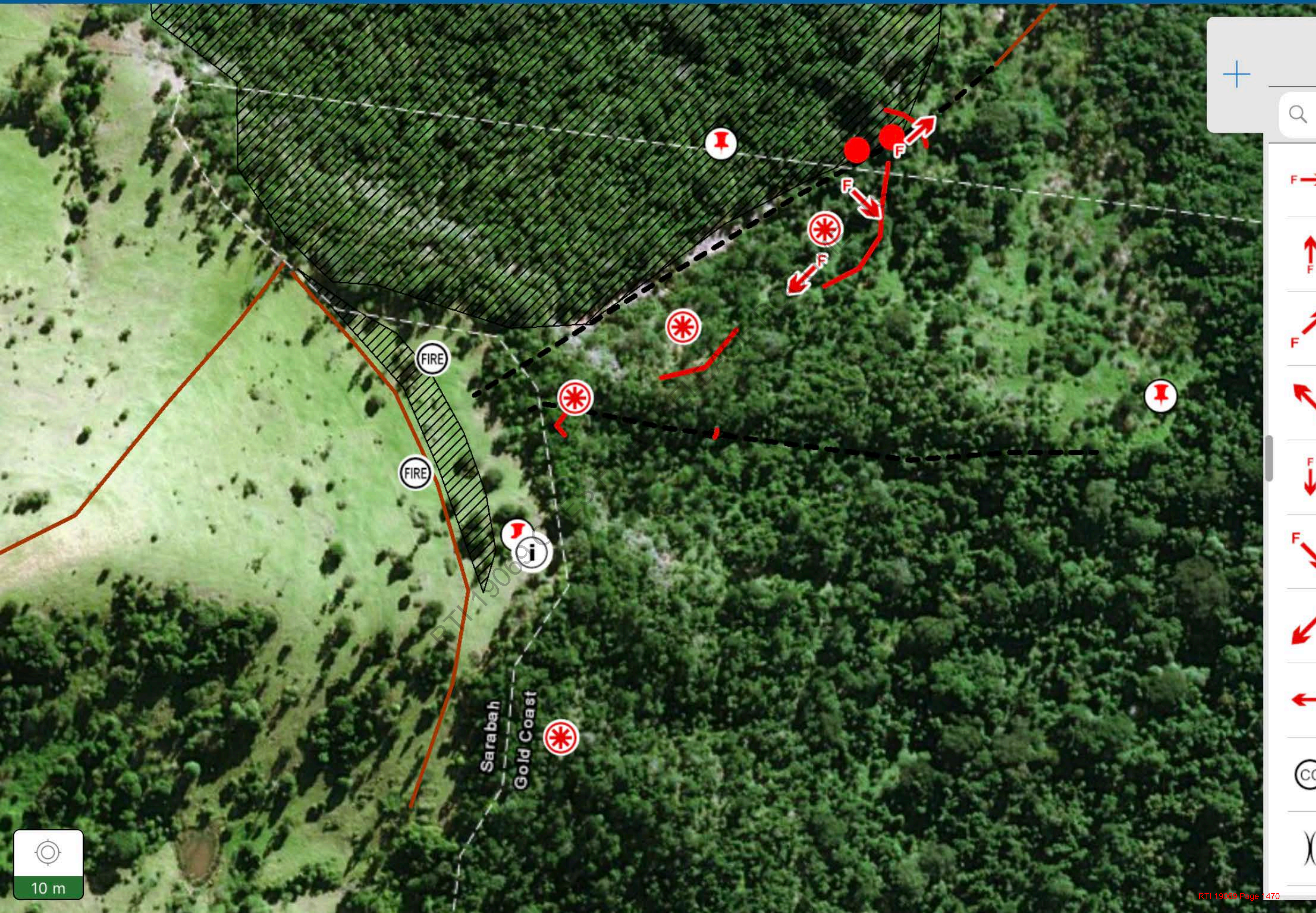
AAS Brad Barnes  
AOB Steve James

Alpaca  
FB448

2019-09-17  
11:40:10+10:00



Maps





DIRECTION  
325 deg(T)

28.19601°S  
153.17375°E

ACCURACY 10 m  
DATUM WGS84



AAS WBruce

SARABAH alpaca

2019-09-18  
08:45:24+10:00



DIRECTION  
263 deg(T)

28.18092°S  
153.16398°E

ACCURACY 5 m  
DATUM WGS84



AAS WBruce

SARABAH pyramid ck

2019-09-18  
08:52:31+10:00



DIRECTION  
183 deg(T)

28.17433°S  
153.20315°E

ACCURACY 100 m  
DATUM WGS84



AAS WBruce

SARABAH Nixon

2019-09-18  
08:48:59+10:00



DIRECTION  
328 deg(T)

28.15681°S  
153.13568°E

ACCURACY 5 m  
DATUM WGS84



AAS WBruce

SARABAH alpaca

2019-09-18  
08:41:57+10:00



DIRECTION  
191 deg(T)

28.17405°S  
153.20591°E

ACCURACY 5 m  
DATUM WGS84



AAS WBruce

SARABAH Nixon

2019-09-18  
08:48:41+10:00



DIRECTION  
187 deg(T)

28.17405°S  
153.20518°E

ACCURACY 5 m  
DATUM WGS84



AAS WBruce

SARABAH Nixon

2019-09-18  
08:48:45+10:00



DIRECTION  
188 deg(T)

28.19007°S  
153.19068°E

ACCURACY 5 m  
DATUM WGS84



AAS WBruce

SARABAH pyramid ck

2019-09-18  
08:50:22+10:00



DIRECTION  
299 deg(T)

28.19350°S  
153.18243°E

ACCURACY 10 m  
DATUM WGS84



AAS WBruce

SARABAH  
pyramid ck

2019-09-18  
08:51:04+10:00



DIRECTION  
217 deg(T)

28.14123°S  
153.14044°E

ACCURACY 5 m  
DATUM WGS84



AAS WBruce

SARABAH alpaca

2019-09-18  
08:40:37+10:00



DIRECTION  
328 deg(T)

28.15681°S  
153.13568°E

ACCURACY 5 m  
DATUM WGS84



AAS WBruce

SARABAH alpaca

2019-09-18  
08:41:57+10:00



DIRECTION  
329 deg(T)

28.19594°S  
153.17210°E

ACCURACY 10 m  
DATUM WGS84



AAS WBruce

SARABAH alpaca

2019-09-18  
08:45:20+10:00



DIRECTION  
325 deg(T)

28.19601°S  
153.17375°E

ACCURACY 10 m  
DATUM WGS84



AAS WBruce

SARABAH alpaca

2019-09-18  
08:45:24+10:00



DIRECTION  
299 deg(T)

28.19350°S  
153.18243°E

ACCURACY 10 m  
DATUM WGS84



AAS WBruce

SARABAH  
pyramid ck

2019-09-18  
08:51:04+10:00



DIRECTION  
123 deg(T)

28.19192°S  
153.18463°E

ACCURACY 5 m  
DATUM WGS84



AAS WBruce

SARABAH  
pyramid ck

2019-09-18  
08:50:50+10:00



DIRECTION  
183 deg(T)

28.17433°S  
153.20315°E

ACCURACY 100 m  
DATUM WGS84



AAS WBruce

SARABAH Nixon

2019-09-18  
08:48:59+10:00



DIRECTION  
69 deg(T)

28.10938°S  
153.14105°E

ACCURACY 30 m  
DATUM WGS84



AAS WBruce

SARABAH

2019-09-18  
08:39:18+10:00



DIRECTION  
191 deg(T)

28.17405°S  
153.20591°E

ACCURACY 5 m  
DATUM WGS84



AAS WBruce

SARABAH Nixon

2019-09-18  
08:48:41+10:00



DIRECTION  
12 deg(T)

28.19842°S  
153.18673°E

ACCURACY 5 m  
DATUM WGS84



AAS WBruce

SARABAH alpaca

2019-09-18  
08:45:59+10:00



DIRECTION  
69 deg(T)

28.10938°S  
153.14105°E

ACCURACY 30 m  
DATUM WGS84



AAS WBruce

SARABAH

2019-09-18  
08:39:18+10:00



DIRECTION  
202 deg(T)

28.13804°S  
153.14371°E

ACCURACY 5 m  
DATUM WGS84



AAS WBruce

SARABAH

2019-09-18  
08:40:26+10:00



DIRECTION  
202 deg(T)

28.13804°S  
153.14371°E

ACCURACY 5 m  
DATUM WGS84



AAS WBruce

SARABAH

2019-09-18  
08:40:26+10:00



DIRECTION  
198 deg(T)

28.17457°S  
153.20671°E

ACCURACY 100 m  
DATUM WGS84



AAS WBruce

SARABAH Nixon

2019-09-18  
08:48:38+10:00



DIRECTION  
163 deg(T)

28.07299°S  
153.13638°E

ACCURACY 5 m  
DATUM WGS84



AAS W Bruce

SARABAH

2019-09-18  
08:37:46+10:00



DIRECTION  
42 deg(T)

28.15990°S  
153.13160°E

ACCURACY 100 m  
DATUM WGS84



AAS WBruce

SARABAH alpaca

2019-09-18  
08:41:45+10:00



DIRECTION  
163 deg(T)

28.07299°S  
153.13638°E

ACCURACY 5 m  
DATUM WGS84



AAS W Bruce

SARABAH

2019-09-18  
08:37:46+10:00



DIRECTION  
12 deg(T)

28.19842°S  
153.18673°E

ACCURACY 5 m  
DATUM WGS84



AAS WBruce

SARABAH alpaca

2019-09-18  
08:45:59+10:00



DIRECTION  
198 deg(T)

28.17457°S  
153.20671°E

ACCURACY 100 m  
DATUM WGS84



AAS WBruce

SARABAH Nixon

2019-09-18  
08:48:38+10:00



DIRECTION  
217 deg(T)

28.14123°S  
153.14044°E

ACCURACY 5 m  
DATUM WGS84



AAS WBruce

SARABAH alpaca

2019-09-18  
08:40:37+10:00



DIRECTION  
42 deg(T)

28.15990°S  
153.13160°E

ACCURACY 100 m  
DATUM WGS84



AAS WBruce

SARABAH alpaca

2019-09-18  
08:41:45+10:00



DIRECTION  
188 deg(T)

28.19007°S  
153.19068°E

ACCURACY 5 m  
DATUM WGS84



AAS WBruce

SARABAH pyramid ck

2019-09-18  
08:50:22+10:00



DIRECTION  
263 deg(T)

28.18092°S  
153.16398°E

ACCURACY 5 m  
DATUM WGS84



AAS WBruce

SARABAH pyramid ck

2019-09-18  
08:52:31+10:00



DIRECTION  
263 deg(T)

28.18092°S  
153.16398°E

ACCURACY 5 m  
DATUM WGS84



AAS WBruce

SARABAH pyramid ck

2019-09-18  
08:52:31+10:00



DIRECTION  
315 deg(T)

28.18056°S  
153.18433°E

ACCURACY 5 m  
DATUM WGS84



AAS WBruce

SARABAH pyramid ck

2019-09-18  
08:51:40+10:00



DIRECTION  
187 deg(T)

28.17405°S  
153.20518°E

ACCURACY 5 m  
DATUM WGS84



AAS WBruce

SARABAH Nixon

2019-09-18  
08:48:45+10:00



DIRECTION  
315 deg(T)

28.18056°S  
153.18433°E

ACCURACY 5 m  
DATUM WGS84



AAS WBruce

SARABAH pyramid ck

2019-09-18  
08:51:40+10:00



DIRECTION  
299 deg(T)

28.19350°S  
153.18243°E

ACCURACY 10 m  
DATUM WGS84



AAS WBruce

SARABAH  
pyramid ck

2019-09-18  
08:51:04+10:00



DIRECTION  
315 deg(T)

28.18056°S  
153.18433°E

ACCURACY 5 m  
DATUM WGS84



AAS WBruce

SARABAH pyramid ck

2019-09-18  
08:51:40+10:00



DIRECTION  
123 deg(T)

28.19192°S  
153.18463°E

ACCURACY 5 m  
DATUM WGS84



AAS WBruce

SARABAH  
pyramid ck

2019-09-18  
08:50:50+10:00



DIRECTION  
329 deg(T)

28.19594°S  
153.17210°E

ACCURACY 10 m  
DATUM WGS84



AAS WBruce

SARABAH alpaca

2019-09-18  
08:45:20+10:00