

Applying Online for your Volunteer Blue Card

Rural Fire Service Applicants



Visit <https://my.bluecard.qld.gov.au> and click 'Register for an online account'. This process will take approximately 5 minutes, and is only done once. You will need to use a Dept. of Transport and Main Roads issued ID or Customer Reference Number (e.g. Driver Licence or Proof of Age Card) as proof of identity.



Once registration is completed you will be issued with an account number. Write this number on the Rural Fire Service Volunteer Application Form.



Once your Rural Fire Service volunteer application has been processed by the Area Office, the Rural Fire Service State Office will use your account number and date of birth to link you to the Rural Fire Service.



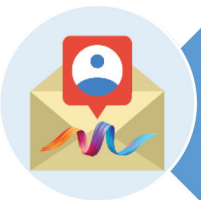
You will then receive an SMS or email to advise that Rural Fire Service has created a link with you. You are now able to complete the blue card application.



From the Applicant Portal home screen, click 'Apply for a blue card', and follow the prompts. The category of child-related work is volunteer. From here, most of the application is prefilled for you. The remaining information should take you less than 5 minutes to complete.



Blue Card Services receives and processes the application.



Blue Card Services will notify you and the Rural Fire Service of the outcome (successful or unsuccessful).

Need help with applying? Contact the QFES Blue Card Hub

(07) 3635 1681 (Monday to Friday, 8am to 4pm)
QFES.BlueCard@qfes.qld.gov.au
 Reply Paid 87663, Brisbane QLD 4001

