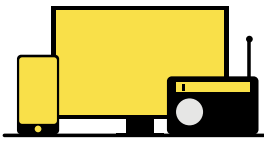


En in la, gamta pah in



CIANPIAKNA (KIHILHNA)

Kihilhna (cianpiakna) cih ciang in thupiang khat peuh kipan khinta, om khinta cihna hi a, thakhat thu in lauhaina ding om lo hi. Thu leh laa khat peuh a hunzui in ki khekthei, kikhel thei ahih man in thupiangte en den in, kan den in.



EN IN LA, GAMTA PAH IN

En in la, gamta pah a deihna in alauhuai mahmah dinmun om hi ci a deihna hi. Khuahunte hong ki khelkhel a, na it, na ngaihte leh nang na kidaal theih na ding in tu mahmah in, kipan in sepah a, kidal kikep ding kism hi.



THUKIN KIDOPDING

Thukin kidopding cih ciang in Lauhuaina sung ah om kha thei na hih man in, thakhat thu-in, gamtat khat ding kism hi.



Nang leh na kiim a te kikep theih na ding in Zuih Ding a baih pawl khat te.

- » Mi te a ding in Hilh kholh na leh vai Kín thupi te geel kholh na.
- » Nang a ding Vai kín thupi ahih kei leh nangtung ah mi ong ki ngak leh, vai bang ci om cih pong man in kan in La, omnading ki ging khol den in.
- » Hilhkhohna Khauh tak in ong kigenkhiat leh, Nang, na Innkuanpih te, Nalawmte leh na ganhing te uh lungmuang tak in ki om thei cih phawk in.

Akibanglo lauhainate a ding in hong kigenkhol thute online pan in, na muh theih ding in:

Tuikhang Huihpi Pingpei

Hamsat dongtuahna tawh kisai na tualsung kumpi thuneite thuzaksakna cih te pan zong ki en thei hi **“disaster.qld.gov.au/warnings”** Ahih kei leh A muanhuai channel Thu thak gen na te pan.

Gamsung meikang

Hih anuai a kumpi website pan in **“qfes.qld.gov.au/current-incidents”** Mipi theih thukizaaknate pan in thuman tak in zum pan hong kipulak hong kigenkhia hi.

A nasia mahmah / A uanglua Meisatna / khualumna

Hih kumpi website pan in **“qld.gov.au/health/conditions/health-alerts”** Cimdamna, khuahun dinmunte, cidamna tawh kisai kiphawksaknate kigenkhia hi. Tualsung mite thuthak kizaakna pan in hong khahkhia / pulaak khia hi.

Na tualsung thukizakna radio phualpi pan in thupiang khat peuh, kidopding thute khat peuh hong ki pulaak khia ding hi.

qfes.qld.gov.au/AWS

